



International Association for Relational Psychoanalysis & Psychotherapy (IARPP)

IARPP 18TH ANNUAL CONFERENCE

**Expanding Our Clinical Experiences:
The Spoken, Unspoken, and Unspeakable in
Relational Psychoanalysis and Psychotherapy**

Thursday, June 18 – Sunday, June 21, 2020

THE LUSKIN CONFERENCE CENTER

LOS ANGELES, CA, USA



Conference Chairs:

Philip Ringstrom, PhD, PsyD; Ilene Philipson, PhD, PhD; and Hazel Ipp, PhD

DEAR COLLEAGUES,

As our relational theories move us beyond the “talking cure” toward the unspoken and the implicit, the clinical encounter can seem both infinite in possibility and, simultaneously, unmoored. It challenges us to wonder how we navigate the verbal and nonverbal, the perceptual and experiential and what is permissible and impermissible in our clinical work. Drawing on more established as well as emerging insights from the multiple analytic perspectives within our comparative “big tent,” we will gather in Los Angeles to promote a clinically

grounded, multi-generational conversation. By listening closely together to both the drama of specific clinical moments and the stories of patients and therapists deeply entwined in the ongoing therapeutic relationship, we hope to challenge and enlarge our vision of relational psychoanalysis today and for the future.

We look forward to seeing you in Los Angeles.

Philip Ringstrom, Ilene Philipson, and Hazel Ipp
CONFERENCE CHAIRS, 2020

LOCATION AND ACCOMMODATIONS

The 2020 Conference will take place at the **Luskin Conference Center**. Every element of the UCLA Meyer and Renee Luskin Conference Center and its adjoining hotel in Los Angeles was designed to honor the intrinsic link between innovation and rejuvenation. A LEED Platinum-certified property enhanced by leading edge resources, the UCLA Luskin Conference Center’s bright and relaxing environment encourages open engagement. Here, leading academic minds, medical innovators, researchers, political leaders and social visionaries meet to exchange ideas that will move our world forward.

Surrounded by iconic UCLA landmarks and just steps from the Ronald Reagan Medical Center, the Luskin Conference Center pulses with the energy of a vibrant campus community by day. By night, its accommodations offer a comfortable place to recharge, defining it as one of the premiere hotels in Westwood. With more than 25,000 square feet of versatile, thoughtfully-executed event space, this UCLA hotel sets a higher bar for Los Angeles meeting spaces. **The Luskin Conference Center** is offering IARPP conference attendees’ **special conference rates of \$279/ single or double** exclusive of applicable state and local taxes.

To make a reservation, please click on this link:

<https://reservations.travelclick.com/99861?groupID=2433505&hotelID=99861#/guestsandrooms>.

Those requesting pre or post nights outside of the dates outlined on the reservation link can also contact the hotel directly by calling **(855) 522-8252** and asking for the reservations department. To confirm your reservation, contact the hotel directly at (855) 522 – 8252. A first night’s room deposit or credit card will guarantee your reservation. The hotel requires at least 48 hours notice of cancellation to receive a refund. **BE SURE TO MENTION THE IARPP 2020 CONFERENCE TO RECEIVE THE GROUP RATE!** The group rate is available until **May 17, 2020** or until all rooms in the group have been reserved, whichever occurs first. You can make a reservation after this date, but will not be guaranteed the group rate.

Luskin Conference Center

425 Westwood Plaza, Los Angeles, CA 90095

Website: <http://www.LuskinConferenceCenter.UCLA.edu/>

Reservation Link: <https://reservations.travelclick.com/99861?groupID=2433505&hotelID=99861#/guestsandrooms>

SPECIAL DISCOUNT AIRFARES



The airlines of SkyTeam, Official Alliance Network for our event, offer attractive airfares for participants. SkyTeam comprises 20 leading international airlines: Aeroflot, Aerolíneas Argentinas, Aeroméxico, Air Europa, Air France, Alitalia, China Airlines, China Eastern, China Southern, Czech Airlines, Delta Air Lines, Kenya Airways, KLM Royal Dutch Airlines, Korean Air, Middle East Airlines, Saudia, TAROM, Vietnam Airlines and Xiamen Air.

To book your travel now, visit www.skyteam.com/GlobalMeetings and enter your Event ID: **4264S**. Or, use the unique booking URL: <http://res.skyteam.com/Search/promoDefault.aspx?vendor=sky&promo-code=4264S>.

SPECIAL DISCOUNT CAR RENTAL

AVIS Avis has been appointed the official car rental company for the **IARPP 2020 Conference**. Special discounted rates are available up to one week before and one week after the dates of the meeting. Be sure to protect your reservation needs by making a reservation at least two weeks in advance.

To make a reservation, phone: **Avis Meeting Services Desk at 1-800-331-1600** (From anywhere in the U.S. or Canada). **Be sure to mention the Avis Worldwide Discount (AWD) Number is G028659. You must have this authorization number in order to make the reservation.**

EDUCATIONAL OBJECTIVES AND CONTINUING EDUCATION

This conference is intended for psychoanalysts, psychiatrists, psychologists, social workers, psychiatric nurses, marriage and family counselors, and clinical professional counselors. The conference is organized to facilitate maximum opportunity for questions, comments and dialogue between the audience and the presenters, allowing clinicians to engage in an extensive variety of topics relevant to the field.

EDUCATIONAL OBJECTIVES

At the conclusion of the conference, participants will be able to consider:

- The role of Relational analysis in transcending the traditional psychoanalytic “talking cure” by addressing much more than the spoken language aspect of the treatment
- The multitude of therapeutic activity revealed in both the implicit and explicit communication of what is spoken, unspoken and unspeakable
- The unique forms of engagement in the psychoanalytic field in terms of its implicit, co-creatively evolving drama, its narrative tales, and how these can be addressed in ways beyond mere interpretation
- How Relational Psychoanalysis presents a theoretical and clinical “big tent” applicable to all forms of psychoanalytic treatment
- How Relational Psychoanalysis plays a critical role in adapting to the 21 Century, the complexities of its radically transforming cultural, and its manifestation in profoundly novel and unfamiliar forms of media expression.

CONTINUING EDUCATION

CE Learning Systems, LLC is approved by the American Psychological Association to sponsor continuing education for psychologists. CE Learning Systems maintains responsibility for this program and its content. CE credit will be available to social workers pending approval for conference by NASW.

The International Association for Relational Psychoanalysis and Psychotherapy (IARPP) is recognized by the New York State Education Department’s State Board for Social Work as an approved provider of continuing education for licensed social workers #SW-0202.

The International Association for Relational Psychoanalysis and Psychotherapy (IARPP) is recognized by the New York State Education Department’s State Board for Mental Health Practitioners as an approved provider of continuing education for licensed marriage and family therapists. #MFT-0070.

The International Association for Relational Psychoanalysis and Psychotherapy (IARPP) is recognized by the New York State Education Department’s State Board for Mental Health Practitioners as an approved provider of continuing education for licensed psychoanalysts. #P-0037.

If you have any questions about CE credits, please contact Lucia Lezama at llezama@iarpp.net.

Continuing Education Hours will be awarded as follows:

Thursday Optional Half Day Session = 3.0 Hours

Main Conference Program (Thursday - Sunday) = 22.0 Hours

CONFERENCE REGISTRATION, SESSION SELECTIONS, CONFERENCE PAPER RENTAL, AND REGISTERING FOR THE CONFERENCE RECEPTION

REGISTRATION

REGISTER ONLINE: www.iarppconference.org

... or by completing and mailing the enclosed Conference Registration Form. Registration for the conference allows attendance at all sessions of the Main Conference, coffee and breakfast rolls on Friday, Saturday and Sunday mornings, and all scheduled coffee breaks. Lunches are on your own.

IARPP is going green! In an effort to reduce paper waste, we will not be printing the brochure and onsite conference materials. The conference app will have everything you need. It may be helpful to download the IARPP 2020 Conference App at: https://whova.io/portal/ieoce_202006/. Once registered, you will be added to the app and further instructions will be emailed.

Early registration is strongly advised to ensure a place in your preferred Paper Sessions. Saturday afternoon Session assignments will be made strictly on a first-come (paid), first-served basis. Please refer to the program and indicate your selections on the Conference Registration Form. Submit your completed Conference Registration Form with your check or credit card information **no later than May 17th, 2020** to be eligible for the early registration fees. Please note that registrations postmarked **after May 17th, 2020** will be subject to the regular conference fee. **We regret that exceptions cannot be made to allow additional registrants into a Paper Session that has reached its maximum capacity.**

ELECTRONIC PAPER PACKET RENTAL

To aid you in your conference experience, for an additional fee, optional presentation papers **MAY BE ORDERED ON THE CONFERENCE REGISTRATION FORM** for you to read during the paper session. Only those presenters who approved distribution of their papers will be available for rent. Requests for these papers **MUST BE MADE IN ADVANCE OF THE CONFERENCE**. ALL PAPERS WILL BE SENT ELECTRONICALLY TO YOUR SMART PHONE PRIOR TO THE SESSION AND DELETED RIGHT AFTER. TRANSFERRING OR SAVING SUCH PAPERS IS NOT ALLOWED.

REFUND POLICY

If your entire registration must be canceled, a refund less \$75 administrative fee will be allowed if requested in writing by May 24th, 2020. Cancellations made in writing between May 24th – June 1st, 2020 will be refunded 50% plus the \$75 administrative fee. We regret that cancellations made after June 1st, 2020 will not be accepted. Cancellations on optional ticketed items such as the conference reception will not be accepted after May 24th, 2020.

FOR FURTHER INFORMATION, PLEASE CONTACT:

**Nilou Mostofi, Conference Manager,
IARPP Conference 2020**

3298 Governor Drive, Suite 22270 • San Diego, CA 92192

Phone: (858) 270-3503 • FAX: (888) 280-1476

Email: iarppconference@km-direct.com

SATURDAY EVENING CONFERENCE RECEPTION

WE INVITE YOU TO JOIN US (for an additional fee) to our **OPTIONAL SATURDAY EVENING CONFERENCE RECEPTION**. Join us for our Saturday night gala party under the stars on the Luskin Center's Centennial Terrace for food, drinks, and dancing to LA's renowned Captain Cardiac and the Coronaries, with ample space for conversation and enjoyment of one of LA's warm summer evenings. This event is cosponsored by the Institute of Contemporary Psychoanalysis in Los Angeles. Please see the Conference Registration Form for **ADDITIONAL** information.

About IARPP

For further information about IARPP, please contact:

Elisa Zazzera, Administrator

1270 Broadway, Suite 1109, New York, NY 10001

Phone: +1-212-669-6123

Email: office@iarpp.net | www.iarpp.net

The International Association for Relational Psychoanalysis and Psychotherapy is an international association founded in 2001. The association is conceived of as a professional and intellectual community of individuals—clinicians and non-clinicians such as academics—committed to developing relational perspectives and exploring similarities and differences with other approaches to analysis and psychotherapy.

Steven Kuchuck, DSW
President, 2018-2021

IARPP MEMBERSHIP BENEFITS INCLUDE:

- Online Member Directory
- Participation in IARPP Colloquium Series
- Participation in IARPP Web Seminar Series
- Reduced Rates for IARPP Conferences
- Access to IARPP Colloquium Archives
- Psychoanalytic Dialogues subscription (6 issues/year and includes Free Online Access to all PD archives)
- Discounts for relationally oriented journals and books: (All books from the Relational Book Series of Taylor and Francis; plus Journals such as: JAPA, Psychoanalytic Inquiry, Gender and Sexuality, Psychoanalytic Quarterly, and more)
- IARPP Relational Voices Series
- IARPP Newsletter
- IARPP Members' Listserv

THURSDAY, JUNE 18

OPTIONAL PRE-CONFERENCE PROGRAMS

For a full description of pre-conference titles & objectives, please visit iarpp.net/events-hub-page/upcomingconference/.

7:45 am Registration for Optional Pre-Conference Programs

8:30 am

- A. Half-Day: Psychoanalysis on TV: The Making of the Documentary Couples Therapy**
Presenters: Orna Guralnik, PsyD, USA and Virginia Goldner, PhD, USA
Show directors: Josh Kriegman, USA; Elyse Steinberg, USA; and Eli Despres, USA
Interlocutor: Spyros Orfanos, PhD, USA
- B. Half-Day: The Performing Art of Therapy**
Presenter: Mark O'Connell, LCSW-R, MFA, USA
- C. Half-Day: Psychoanalysis, the Freedom of Speech, the Emancipatory Movement of Desire**
Presenter: Jill Gentile, PhD, USA
Moderator & Interlocutor: Rachel Sopher, LCSW, USA
- D. Half-Day: Enactments in Child-Adolescent Relational Psychotherapy: Challenges and Opportunities of Interactive Regulation**
Chair: Ann Marie Sacramone, MEd, USA
Presenters: Carmen Domingo Peña, PhD, Spain; Shiho Ike, MA, Japan; and Laurel Silber, PsyD, USA
Interlocutors: Gerard Webster, PhD, PsyD, Australia; and Raimundo Guerra Cid, PhD, Spain
- E. Half-Day: Writing the Unspoken and Unspeakable: A Clinical Writing Workshop**
Presenter: Suzi Naiburg, PhD, LICSW, USA

11:30am Adjournment of Pre-Conference Half-Day Sessions.

MAIN CONFERENCE

For a full description of pre-conference titles & objectives, please visit iarpp.net/events-hub-page/upcomingconference/.

THURSDAY, JUNE 18

12:00pm PAPER/PANEL SESSION 1: (12 Concurrent Sessions)

- 1. Speaking the Unspeakable; Confronting Our Professional Destructiveness**
Speakers: Joyce Slochow, PhD, ABPP, USA; and Stephen Hartman, PhD, USA
Discussant: Sue Grand, PhD, USA
Moderator: Jamie Rodin, LCSW, PsyD, USA
- 2. The Analyst's Experience of Love, Loss, Regret, and Gender**
Speakers: Marc Rehm, PhD, USA; David Braucher, LCSW, PhD, USA; and Tarun Vohra, MA, India
Moderator: Larry Brooks, PhD, USA
- 3. Autism, Difference and Disability**
Speakers: Manuela Tosti, PsyD, Italy; Daniel Posner, MD, USA; and German Cheung, PsyD, USA
Moderator: Richard Inglis, MBBS, MA, Australia
- 4. The Tango of Eros and Thanatos on the Relational Dancefloor**
Speakers: Faidra Grammenou, PgDip, MSc, Greece; Matina Kaidantzi, PgDip, Greece; and Kostas Mathioudis, MA, Greece
Moderator: Deborah Dowd, LICSW, USA
- 5. Varieties of Play and Playfulness in the Clinical Setting**
Speakers: Giselle Gos, PhD, Canada; Sean Meggeson, MA, RP, Canada; Judi Kobrick, PhD, Canada; and Sam Guzzardi, LCSW, USA
Moderator: Sona DeLurgio, PsyD, LMFT, USA
- 6. From Meaningless Words to Meaningful Actions: Sleeping, Stitching, and Packing Heat**
Speakers: Hilary Offman, MD, FRCPC, Canada; Matt Aibel, LCSW-R, USA; and Laura D'Angelo, MDiv, LP, USA
Moderator: D. Bradley Jones, PsyD, LCSW, USA
- 7. Immigration and Asylum: The Ethical Response**
Speakers: Margy Sperry, PsyD, USA; Hannah Hahn, PhD, USA; and Paula Rampulla, PhD, USA
Interlocutor & Moderator: Bettina von Lieres, PhD, Canada
- 8. Unsilencing Unspeakable Socio-historical Trauma in Individual, Social, and Institutional Contexts**
Speakers: Ruth Lijtmaer, PhD, USA; George Bermudez, PhD, PsyD, USA; and Victoria Gutierrez-Kovner, PsyD, LCSW, USA
Interlocutor & Moderator: Mary Walters, LCSW, PsyD, USA
- 9. Dimensions of Pain and Suicide**
Speakers: Joye Weisel-Barth, PhD, PsyD, USA; Kristen Melnyk, MD, USA; and Laura Molet Estaper, PsyD, Spain
Moderator: Mark Winitsky, PsyD, USA
- 10. Power and Envy in Individual and Group Practice**
Speakers: Alkinoi Lala, MSc, Greece; Konstantinos Mouchalos, PgD, Greece; and Dimitrios Geranios, BSc, Greece
Moderator: Gita Zarnegar, PhD, PsyD, LMFT, USA
- 11. The Unspoken and Unspeakable in Psychotherapy as Reflecting Social Unconscious Un-discussed Issues**
Speakers: Emi Ibi, MA, Japan; and Piyali Chakrabarti, PsyD, MPhil, Singapore
Discussant & Moderator: Haim Weinberg, PhD, USA
- 12. Individuality and the Transcendence of Categorization**
Speakers: Susana Martinez, PhD, LP, USA; Luis Raimundo Guerra Cid, PhD, Spain; and Floriana Irtelli, PhD, Italy
Moderator: Debra Myers, MD, USA

1:30pm Adjournment of Paper/Panel Session 1

1:30pm Coffee Break

2:00pm PAPER/PANEL SESSION 2: (12 Concurrent Sessions)

- 1. Subjectivities Beyond: Trans-Subjectivity and the Inter-Subject**
Speakers: Francisco Gonzalez, MD, USA and Eyal Rozmarin, PhD, USA
Discussant & Moderator: Victor Doñas, MD, Chile
 - 2. The Analyst's Presence in Intersubjective Relating**
Speakers: Nicoletta Agostini, PhD, Italy; Alessia D'Alterio, PhD, Italy; Teresa Isabel Correa, PhD, Argentina
Interlocutor & Moderator: Mark Gerald, PhD, USA
 - 3. Mind-Brain-Bodies in Treatment**
Speakers: Steven Tublin, PhD, USA; Clara Mucci, PhD, Italy; and Andrew Ntsove, MD, MSc, Australia
Interlocutor & Moderator: Judith Pickles, PhD, PsyD, USA
 - 4. From the Inside Out: Three Approaches to Embodied Treatment with Children And Adolescents**
Speakers: Seth Aronson, PsyD, USA; Susan Goodman, LCSW, USA; and Francesca Schwartz, PhD, USA
Moderator: Elyn Freedman, MSW, PsyD, USA
 - 5. Therapeutic Change: Creative Relational Interventions**
Speakers: Peter McKay, BA, Grad Dip Som Psych, Australia; Giancarlo Dimaggio, MD, Italy; Giuseppe Magistrale, PsyD, Italy; Carol Mayhew, PhD, PsyD, USA
Moderator: Jane Jordan, PsyD, USA
 - 6. The Frame and the Setting: Innovative Approaches**
Speakers: Olivia Mandelbaum, PhD, USA; and Karen Perlman, PhD, LP, USA
Discussant: Anthony Bass, PhD, USA
Moderator: Van DeGolia, MD, USA
 - 7. Psychic Citizenship: Linking Self, Group, and Society**
Speakers: Andrew Samuels, UK; Billie Pivnick, PhD, USA; and Jane Hassinger, LCSW, DCSW, USA
Moderator: Billie Pivnick, PhD, USA
 - 8. Reckoning with Heteronormativity: Redressing the Maternal/Paternal Binary and Reworking Oedipal Theory for LGBTQ Couples, Families and Single Parents**
Speakers: Shelley Nathans, PhD, USA; and Emily Seidel, PsyD, USA
Discussant & Moderator: Julie Leavitt, MD, USA
 - 9. Trauma, Abuse, and Dissociation**
Speakers: Rebecca Silvia Rossi, PhD, Italy; Mattia Ferro, PhD, Italy; Koichi Yokoi, MD, Japan; Alejandra Plaza Espinosa, PhD, Mexico
Moderator: Gerard Webster, PhD, PsyD, Australia
 - 10. Migrating Desire: Unspoken Pleasures, Prohibitions, and Possibilities**
Speakers: Lauren Levine, PhD, USA; Sandra Silverman, LCSW, USA; and Janine de Peyer, LCSW, USA
Moderator: Susan Mendenhall, MSW, PsyD, USA
 - 11. Becoming a Self in One's Own Right**
Speakers: Carolyn Schaefer, LCSW-R, USA; Joan Friedman, PhD, USA; and Darren Haber, PsyD, MFT, USA
Interlocutor & Moderator: Celeste Birkhofer, PhD, PsyD, USA
 - 12. Aspects of Supervision**
Speakers: Ayushi Madan, MA, India; Janna Sandmeyer, PhD, USA; and Dana Charatan, PsyD, USA
Interlocutor & Moderator: Barbara Pizer, EdD, USA
- 3:30pm Adjournment of Paper/Panel Session 2
- 3:30pm Coffee Break
- 4:00pm PLENARY I: American Dream?: The Diversity, Creativity and Calamity of Los Angeles
- Presenters:** Estelle Shane, PhD, USA; Glen Gabbard, MD, USA; and Ilene Philipson, PhD, PhD, USA
Interlocutor & Moderator: Christina Emanuel, MFT, PsyD, USA
- 6:00pm Adjournment of Opening Event Plenary I
Israeli Chapter Meeting
- 6:00pm Candidates Reception
- 7:00pm Opening Conference Reception

FRIDAY, JUNE 19

7:00am Registration & Coffee

8:00am PAPER/PANEL SESSION 3: (11 Concurrent Sessions)

1. Candidates' Panel: Thinking, Participating, and Speaking Outside of the Box

Speakers: Sam Guzzardi, LCSW, USA; Michael Melmed, PsyD, USA; Amalia Fernandois, ClinPsych, Chile; and Bettina von Lieres, PhD, Canada

Discussant: William Coburn, PhD, PsyD, USA

Moderator: Sandra Toribio Caballero, PsyD, Spain

2. Scratching the Surface: What Does How We Look Have to Do With Who We Are?

Speakers: Susan Sands, PhD, USA, Sarah Schoen PhD, USA; and Jean Petrucelli, PhD, USA

Moderator: Ali Kimmell, LCSW, USA

3. Creative Treatment Modalities

Speakers: Giuseppe Leo, MD, Italy; Sarit Lev-Bendov, PsyD, Israel; and Sara Biondi, PsyD, Italy

Moderator: Laura Williams, PsyD, USA

4. Resilience and Survival in the Holocaust

Speakers: Sophia Richman, PhD, ABPP, USA; Irit Felsen, PhD, USA; and Zipora Rosenberg Schipper, PhD, Israel

Moderator: Dorianne Sorter, PhD, USA

5. The Whiteness Taboo: Interrogating Whiteness in Psychoanalysis

Speakers: Janie Riley, LMFT, USA; Molly Merson, LMFT, USA; and Ben Ringler, LMFT, USA

Moderator: Michelle Sweet, PhD, USA

6. Shame and its Transformation: A Feminist Perspective

Speakers: Tammy Ben-Shaul, PhD, Australia; Sarah Pouliot, PhD, USA; and Shoshana Ringel, PhD, USA

Moderator: Betsy Cohen, LCSW, PhD, USA

7. Perspectives on Psychic Pain

Speakers: Michael Pariser, PsyD, USA; Adam Kaplan, PhD, USA; and Alberto Samperisi, PhD, Argentina

Moderator: Martha Gilmore, PhD, CGP, USA

8. Psychoanalytic Knowing: The Explicit and the Implicit

Speakers: Paolo Stramba-Badiale, PhD, Italy; Marcia Steinberg, PsyD, USA; and Luciana Maiorino, PhD, Italy

Interlocutor & Moderator: Charles Levin, PhD, Canada

9. Silence is Not Just Golden, It Speaks with a Silver Tongue: Listening to, Understanding, and Using the Unspoken

Speakers: Frank Summers, PhD, ABPP, USA; Kris Yi, PhD, PsyD, USA; and Kerry Thomas-Anttila, PhD, New Zealand

Moderator: Gil Spielberg, PhD, ABPP, USA

10. Transformation and Therapeutic Action

Speakers: Brendan McPhillips, MBBS, MD, Australia; Sol Oren, MA, Israel; and Drew Magidoff, PsyD, USA

Interlocutor & Moderator: Sue Shapiro, PhD, USA

11. The Unspoken in Violations of Power in the Psychoanalytic World

Speakers: Tracy Sidesinger, PsyD, USA; Ginna Clark, PsyD, LPCC, ATR-BC, USA; Roshanak Vahdani, MA, Australia

Interlocutor & Moderator: Roberto D'Angelo, PsyD, MBBS, Australia

9:30am Adjournment of Paper/Panel 3

9:45am President's Welcome

Presenter: Steven Kuchuck, DSW, USA – IARPP President

10:00am PLENARY II: Three Characters in Search of a Story: Empathy as a Complex Relational Achievement

Presenters: Hazel Ipp, PhD, Canada and Malcolm Owen Slavin, PhD, USA

Interlocutor & Moderator: Francesco Andreucci, PhD, Italy

12:00pm Adjournment of Plenary II

12:00pm Lunch (on your own)

1:30pm PLENARY III: Mimetic Understanding: The Embodied Dance of Words and Actions

Presenters: Susanna Federici, PhD, Italy and Gianni Nebbiosi, PhD, Italy

Interlocutor & Moderator: Elizabeth Harvey, PhD, Canada

3:30pm Adjournment of Plenary III & Coffee Break

4:00pm Discussion Group 1

Co-Leaders: Tony Bass, PhD, USA; Adriano Bugliani, PhD, Italy; Adriana Cuenca Carrara, PhD, Mexico; Peggy Crastnopol, PhD, USA; Roberto D'Angelo, PsyD, MBBS, Australia; Sam Gerson, PhD, USA; Francesco Gonzales, MD, USA; Ilana Laor, PhD, Israel; Alejandra Plaza Espinosa, PhD, Mexico; Carmine Schettini, MD, Italy; Joyce Slochower, PhD, USA; and Chana Ullman, PhD, Israel

5:15pm IARPP Membership Meeting

6:15pm Israeli Chapter Meeting

6:15pm Adjournment for the day

SATURDAY, JUNE 20

7:00am Registration & Coffee

8:00am PAPER/PANEL SESSION 4: (12 Concurrent Sessions)

1. The Patient's Responsibility to the Analyst: An Implicit and Unspoken Dimension of Clinical Process

Speakers: Peter Shabad, PhD, USA and Robert Drozek, LICSW, USA

Discussant: Jessica Benjamin, PhD, USA

Moderator: Loren Sobel, MD, MS, USA

2. Analytic Love and Eros

Speakers: Lisa Lyons, PhD, USA; Erik Fagerberg, MA, LCSW, Sweden; and Louella Dias, PhD, USA

Interlocutor & Moderator: Stefanie Glennon, PhD, USA

3. The Relational Body in Analytic Practice and Its Social/ Historical Contexts

Speakers: Doris Brothers, PhD, USA; Jack Foehl, PhD, USA; Roger Frie, PhD, PsyD, RPsych, Canada; and Jon Sletvold, PsyD, Norway

Moderator: Danny Gellersen, LICSW, USA

4. Relational Ethics

Speakers: Simone Drichel, PhD, New Zealand; Garret Wyner, PhD, PhD, PsyD, USA; and Shachaf Bitan, PhD, Israel

Interlocutor & Moderator: Bonnie Zindel, LCSW, USA

5. Global Youth: Trauma, Tragedy, and Immigration

Speakers: Rebecca Versolato, PhD, Singapore; Georgina Spentzou, PhD, Greece; and Yael Lapidot Druyan, LICSW, JD, Israel

Discussant: Malin Fors, Msc, Norway

Moderator: Alioscia Boschiroli, PsyD, Italy

6. Carrying Forward the Work of Emmanuel Ghent: International Perspectives

Speakers: Deepti Sachdev, PhD, India; Neil Altman, PhD, USA; and Shalini Masih, PhD, India

Interlocutor & Moderator: Afarin Kohan, MD, FRCPC, Canada

7. Gender, False Self, and the Unspoken Communications in Japanese Culture: Clinical Implications of a Relational Approach

Speakers: Tayoka Imai, MA, Japan; Satoko Imamoto, MA, Japan; and Ayumi Osagawa, MA, Japan

Interlocutor & Moderator: Rebecca Harrington, DSW, USA

8. Finitude

Speakers: Lissa Schaupp, LCSW, USA; Evelyn Rappoport, PsyD, USA; and Rhonda Sternberg, PhD, USA

Interlocutor & Moderator: Peter Maduro, JD, PsyD, PsyD, USA

9. The Spoken and Unspoken in Eating Disorders and Obesity

Speakers: Cheryl Goldstein, PhD, USA; and Li Qu, MA, China

Discussant: Marie Saba, MA, Peru

Moderator: Kathi Magnussen Levin, PhD, PsyD, USA

10. The Sounds of Silence: Erotic and Affective Embodiment in the Analytic Field

Speakers: Karen Beard, PhD, USA; Dianne Elise, PhD, USA; and Holly Levenkron, LCSW, LICSW, USA

Moderator: Iglis Nancy Rodrigo, BA, Argentina

11. Theoretical Difficulties: How Relationality Enhances our Theories

Speakers: David Slattery, MA HIP, UK; George Hagman, LCSW, USA; and Oksana Yakushko, PhD, USA

Moderator: Michael Pariser, PsyD, USA

12. What Can and Can't Be Said in Treatment and Supervision

Speakers: Margaret Crastnopol, PhD, USA and Sandra Buechler, PhD, USA

Discussant & Moderator: Irwin Hirsch, PhD, USA

9:30am Adjournment of Paper/Panel Session 4

SATURDAY, JUNE 20 (continued)

10:00am **PLENARY IV: The Emergence of Meaning from Unformulated Experience**

Presenters: Donnel Stern, PhD, USA and Philip Ringstrom, PhD, PsyD, USA
Interlocutor & Moderator: Shlomit Yadlin-Gadot, PhD, Israel

12:00pm **Adjournment of Plenary IV**

12:00pm **Editorial Board Meeting**

12:00pm **Lunch (on your own)**

1:30pm **Discussion Group 2**

Co-Leaders: Tony Bass, PhD, USA; Adriano Bugliani, PhD, Italy; Adriana Cuenca Carrara, PhD, Mexico; Peggy Crastnopol, PhD, USA; Roberto D'Angelo, PsyD, MBBS, Australia; Sam Gerson, PhD, USA; Francesco Gonzales, MD, USA; Ilana Laor, PhD, Israel; Alejandra Plaza Espinosa, PhD, Mexico; Carmine Schettini, MD, Italy; Joyce Slochower, PhD, USA; and Chana Ullman, PhD, Israel

2:45pm **PAPER/PANEL SESSION 5: (12 Concurrent Sessions)**

1. **Intersubjectivity, Potential Space, and the Analyst's Transformative Presence**

Speakers: Steven Stern, PsyD, USA; Heather Ferguson, LCSW, USA; and Amy Cooney, PhD, USA

Discussant & Moderator: Sarah Mendelsohn, LCSW, USA

2. **The Dark Side of the Analyst: Narcissism, Anger, and Discomfort**

Speakers: Mariela Andrea Cuello de Cosentino, BA, Argentina; Amalia Rivera, MA, Mexico; and Jose Angel Gil Aguilar, MA, Mexico

Moderator: Miriam DeRiso, PhD, USA

3. **A Relational Perspective on the Treatment of Eating Disorders: From Primitive Mental States to the Intersubjective**

Speakers: Dana Satir, PhD, CEDS, USA; Karen Rosica, PsyD, USA; and Lynda Chassler, PhD, USA

Discussant: Shelley Doctors, PhD, USA

Moderator: Francesca Romana Salimei, PhD, Italy

4. **The Clinical Use of Imagery and Metaphor**

Speakers: Tanya Anagnostopoulou, PhD, Greece; Rachel Altstein, LP, JD, USA; and Philip Gardner, LCSW-R, USA

Interlocutor & Moderator: Lynne Oliva, PsyD, MFT, USA

5. **Borders: Real and Symbolic**

Speakers: Valentina Desiderio, PhD, Italy; Adriana Cuenca Carrara, PhD, Mexico; and Limor Kaufman, PhD, USA

Moderator: Teimuraz Keshelashvili, BSocSc, MsSc, Canada

6. **Caught Between Desire, Agency and Homelessness: Cultural and Clinical Reflections on Sexual Abuse, Seduction and Dissociation in the Indian Clinic**

Speakers: Ashis Roy, PhD, India and Neetu Sarin, PhD, India

Discussant & Moderator: Frances Dillon, LMSW, CSW, USA

7. **Therapists and Medically Assisted Procreation (MAP): Observations and Trends Emerging from Empirical Research and Clinical Vignettes**

Speakers: Valeria Pulcini, MD, PhD, Italy; Ilaria Merici, PhD, Italy; and Milko Prati, PhD, Italy

Interlocutor & Moderator: Andrew Harlem, PhD, USA

8. **Envy and Enactment: Relational Opportunities to Work Through the Unspeakable Fear and Shame**

Speakers: Angelica Tsikli, BS, Greece; Carmine Schettini, MD, Italy; and Marilou Kountria, MSc, Greece

Moderator: Kati Breckenridge, PhD, PsyD, USA

9. **Unspoken Language: The Perverse, The Traumatic, and The Implicit**

Speakers: Iris Lerman, MA, Israel; Maria Jose Mezzera, MA, Chile;

Paula Vera, MA, Chile; and Ilana Laor, PhD, Israel

Interlocutor & Moderator: Jeffrey Seitelman, MD, PhD, USA

10. **When Unspoken Mourning Leads to Unspeakable Pain: The Clashing Rocks of Implicit Rage in the Therapeutic Journey to Ithaka**

Speakers: Sevasti Gkioka, MSc, Greece; Kyriaki Mertzani, MD, Greece; and Manousia Kypraiou, MSc, Greece

Moderator: Robin Cohen, PhD, PsyD, USA

11. **Relational Time: Past, Present, and Future**

Speakers: Christopher Bonovitz, PsyD, USA; Daniel Goldin, MFT, PsyD, USA; and Davide Belluardo, PhD, Italy

Interlocutor & Moderator: Stuart Pizer, PhD, ABPP, USA

12. **Live Supervision: Exploring Dyadic Affect Regulation in Treatment and Supervision**

Speakers: Jacqueline Gotthold, PsyD, USA; Cristina Bonnucci, PsyD, Italy; Fabia Banella, PhD, Italy; and Jenna Davino, LCSW, USA

4:15pm **Adjournment of Paper/Panel Session 5 & Coffee Break**

4:30pm **IARPP Meetings**

Invited Panel: Muriel Dimen Fellowship 2020 – An Interdisciplinary Presentation

Speakers: Naomi Morganstern, PhD, Canada; and Stephanie Koziej, MPhil

Moderator: Hilary Offman, MD, FRCPC, Canada

5:30pm **Adjournment for the day**

6:00pm **CONFERENCE RECEPTION**

Event is an additional charge. For more information, please see registration form. This event is co-sponsored by the Institute of Contemporary Psychoanalysis in Los Angeles.

**JOIN US FOR OUR
SATURDAY NIGHT GALA PARTY
UNDER THE STARS ON THE LUSKIN CENTER'S
CENTENNIAL TERRACE
FOR FOOD, DRINKS, AND DANCING TO
LA'S RENOWNED
CAPTAIN CARDIAC AND THE CORONARIES.**



SUNDAY, JUNE 21

8:00am **Registration & Coffee**

8:30am **PAPER/PANEL SESSION 6: (12 Concurrent Sessions)**

1. **When Minds Meet: The Work of Lew Aron**

Speakers: Samuel Gerson, PhD, USA; Spyros Orfanos, PhD, USA; and Galit Atlas, PhD, USA

Moderator: Jessica Benjamin, PhD, USA

2. **Shame, Trauma, and the Analyst's Subjectivity**

Speakers: Jean Principe, PhD, USA; Robin Young, PhD, USA; and Konstantina Adamopoulou, MSc, Greece

Moderator: Maria Tammone, PhD, Italy

3. **'Fieldwork': Speakable, Unspoken and Unspeakable States from a Bionian Field Theory Perspective**

Speakers: Duncan Cartwright, PhD, South Africa and Peter Goldberg, PhD, USA

Discussant: Rachael Peltz, PhD, USA

Moderator: Marina Amore, PhD, Italy

4. **How Analytic Writing Catalyzes the Implicit, Unspoken, and Unspeakable in the Analyst and the Field**

Speakers: Karen Martin, USA; Marcia Dobson, PhD, PhD, USA; and Brenda Solomon, MD, USA

Moderator: Suzi Naiburg, PhD, LICSW, USA

5. **Confrontations, Quarrels, and Resistance in Power Dynamics**

Speakers: Don Greif, PhD, USA; Malin Fors, MSc, Norway; Rachel Kabasakalian McKay, PhD, EdM, USA; and David Mark, PhD, USA

Interlocutor & Moderator: Adriano Bugliani, PhD, Italy

SUNDAY, JUNE 21 (continued)

6. Multiple Identities, Hidden Subjectivities: The Biracial-Upwardly Mobile Psychoanalyst

Speakers: Susan Rios, MS, LCSW, USA; and Adam Rodriguez, PsyD, USA

Discussant: Veronica Abney, PhD, USA

Moderator: Lourdes Casares, PhD, USA

7. Challenging the Motherhood Mandate

Speakers: Hillary Grill, LCSW, USA; Caryn Sherman-Meyer, LCSW, USA; and Sharyn Leff, LCSW, USA

Moderator: Sally Bjorklund, MA, LMHC, USA

8. Shame and Its Influence on the Spoken, the Unspoken, and the Unspeakable

Speakers: Yael Greenberg, PsyD, USA; Robert Benedetti, PhD, USA; and Janet Benton, PsyD, USA

Interlocutor & Moderator: Joyce Klein, LICSW, USA

9. The Pleasures and Banality of the Negative and The Unknown

Speakers: Jade McGleughlin, LICSW, USA; Stacey Novack, PsyD, USA; and Uri Hadar, PhD, Israel

Discussant: Chana Ullman, PhD, Israel

Moderator: Diana Faydysh, MA, USA

10. Speaking of the Unspoken, Unsymbolized, and Unrepresented in Self and Space

Speakers: Sigal Eden Almogi, PhD, Israel; Smadar de Lange, PhD, Israel; and Rose Gupta, PsyD, LCSW, USA

Interlocutor & Moderator: Joyce Slochower, PhD, ABPP, USA

11. Unspeaking Spirituality and Religion in Psychoanalysis by Speaking our Rhetorical Problem

Speakers: Earl Bland, PsyD, USA; Brad Strawn, PhD, USA; and Roy Barsness, PhD, USA

Moderator: Lewis Barth, PhD, PsyD, USA

12. The Emerging Clinical Mind: An Intimate Dialogue within the Supervisory Matrix

Speakers: Taz Morgan, MA, USA and Gabrielle Taylor, PhD, USA

Discussant: Michelle Harwell, LMFT, PsyD, USA

Moderator: Robyn Sewitz, PsyD, LCSW, USA

10:00am Adjournment of Paper/Panel Session 6

10:15am PLENARY V: Clinical Implications of the Analyst's Subjectivity – On the Impact of Culture, Psyche and Soul

Presenters: Stavros Charalambides, MA, Greece and Sandra Toribio Caballero, PsyD, Spain

Discussant & Moderator: Steven Kuchuck, DSW, USA

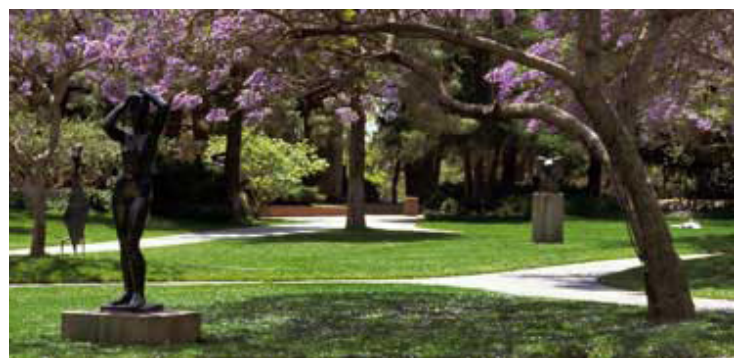
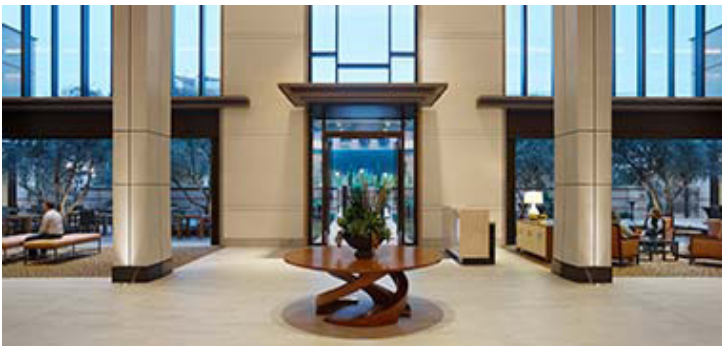
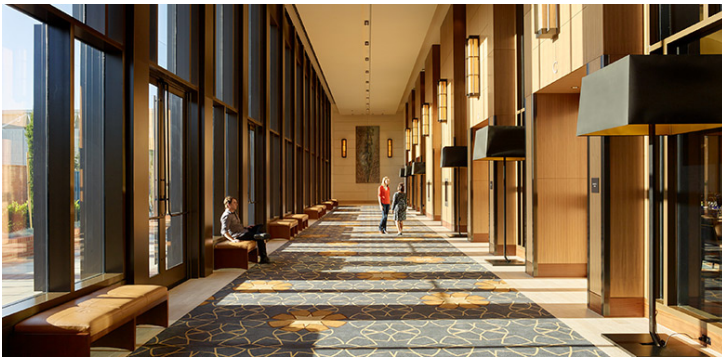
12:15pm Conference Closing Remarks: Our Relational Legacy: An Invitation to Think?

Presenter: Margaret Mitchell Black, LCSW, USA

12:30pm Round Table Discussion with the Audience

Presenters: Malcolm Owen Slavin, PhD, USA; Susanna Federici, PhD, Italy; Steven Kuchuck, DSW, USA; Philip Ringstrom, PsyD, PhD, USA; and Ilene Philipson, PhD, PhD, USA

1:15PM FINAL ADJOURNMENT



IARPP 2020 CONFERENCE REGISTRATION FORM

4 WAYS TO REGISTER!

ONLINE
www.iarppconference.org

BY FAX
+1-888-280-1476

BY PHONE
+1-858-270-3503

BY MAIL
IARPP 2020 Conference, 3298 Governor Dr., Ste. 22270, San Diego, CA 92192

PLEASE PRINT OR TYPE

Last Name: _____ First Name: _____ Degree(s): _____

Address: _____

City: _____ State: _____ Postal Code: _____ Country: _____

Phone Number: (____) _____ Fax Number: (____) _____ Email: _____

Profession: _____ State/Professional License No.: _____ (for CE Certificate)

OPTIONAL PRE-CONFERENCE: By or On May 18th After May 18th
Member \$ 80 \$110
Non-Member \$110 \$140

THURSDAY, PRE-CONFERENCE SESSION SELECTION:

1st Choice _____ 2nd Choice _____

MAIN CONFERENCE REGISTRATION FEES

CATEGORY 1: USA By or On May 18th After May 18th
Member \$480 \$530
Non-Member \$540 \$590
Candidate/Academic* \$375 \$425
Candidate Non-Member* \$415 \$465
Students* \$210 \$260
Student Non-Member* \$260 \$310

CATEGORY 2: Asia/Africa/Australia/Canada/Europe/Israel/Latin America/New Zealand By or On May 18th After May 18th
Member \$395 \$445
Non-Member \$445 \$455
Candidate/Academic* \$305 \$355
Candidate Non-Member* \$355 \$395
Students* \$150 \$200
Student Non-Member* \$190 \$240

MAIN CONFERENCE PAPER/PANEL SESSION CHOICES

Indicate your preferred choice and one alternative for EACH Session:

Thursday Afternoon Paper/Panel Session 1:

1st Choice _____ 2nd Choice _____

Thursday Afternoon Paper/Panel Session 2:

1st Choice _____ 2nd Choice _____

Friday Morning Paper/Panel Session 3:

1st Choice _____ 2nd Choice _____

Saturday Morning Paper/Panel Session 4:

1st Choice _____ 2nd Choice _____

Saturday Afternoon Paper/Panel Session 5:

1st Choice _____ 2nd Choice _____

Sunday Morning Paper/Panel Session 6:

1st Choice _____ 2nd Choice _____

***PLEASE NOTE:** Candidate/Academic and Student registrations must be accompanied by a letter from the Training Director verifying status. Photocopies of Student IDs are also accepted.

OPTIONAL & TICKETED FEES

Paper/Panel Paper(s) Electronic Rental: \$15 each set

The paper panel set will be sent electronically through the conference app with all the papers from the panels you registered. Each electronic packet will be distributed an hour prior to each session and removed from the app after each session. If you switch sessions at the conference, we cannot provide electronic papers for the switched sessions. The downloading or sharing of these papers is prohibited.

Optional Reception Ticket In Advance \$75 At the Conference \$85

FEE TOTALS:

Optional Pre-Conference Programs \$ _____

Main Conference Fee \$ _____

Optional Reception Tickets: QTY: _____ x \$75 = \$ _____

Paper/Panel Sessions Paper(s) Rental: \$15 \$ _____

TOTAL AMOUNT DUE

\$ _____

Check Enclosed. **Payable to: IARPP**

(A \$75.00 U.S. fee will be assessed for returned checks.)

Bill my **Credit Card:** VISA MasterCard AMEX

Account #: _____

Exp. Date: _____ 3- or 4-Digit Security Code#: _____
(on back for MC or VISA, on front for AMEX)

Signature: _____

Street Address on Credit Card Billing

City, State or Province, Country, Zip/Postal Code:

Will you need any special assistance at the conference?

Please list your needs: _____

Mail to: IARPP 2020

3298 Governor Drive, Suite 22270 • San Diego, CA 92192

Phone: +1-858-270-3503 • Fax: +1-888-280-1476

A \$75.00 U.S. fee will be assessed for returned checks.

Only checks linked to a US bank can be accepted.

NOTE: Please make hotel reservations directly with:

Luskin Conference Center

425 Westwood Plaza, Los Angeles, CA 90095

Phone: +1-855-522-8252 Reservations: +1-855-522-8252

Website: <http://www.LuskinConferenceCenter.UCLA.edu/>