



International Association for Relational Psychoanalysis & Psychotherapy (IARPP)

IARPP 20TH ANNUAL CONFERENCE

Relational Psychoanalysis: The Quest for Belonging and the Co-creation of a Therapeutic “Home”

Thursday, June 20 –
Sunday, June 23, 2024
YUCATÁN, MÉRIDA
MEXICO
HYATT REGENCY

Conference Chairs:

Adriana Cuenca Carrara, PhD
Berta Loret de Mola, PhD

Conference Local Committee

Magda Jiménez, Marianella Martínez, Anne Marie Maxwell, Elena Ortiz, Alejandra Plaza, Luisa Saldaña, and Roberto Vargas

Conference North America Committee

Anthony Bass, Margaret Black, Susanna Federici, Hazel Ipp, Gianni Nebbiosi, and Sandra Toribio

DEAR COLLEAGUES,

We will gather in the enchanting land of Yucatan, Mexico, to embark on a profound journey of exploration of the deeply human concept of "Home." Home not just as a physical space, but a realm of psychological significance that lies at the heart of Relational Psychoanalysis and the profound yearning for belonging.

At this international psychoanalytic conference, we will delve into the intricate web of human connections, examining the myriad ways in which the notion of "home" shapes our psyche, influences our relationships, and forms our identities. Our gathering aims to shed light on the profound impact that the quest for belonging exerts on individual and collective psyches, transcending cultural, geographical, and temporal boundaries.

Psychoanalysis, as a discipline, has long grappled with questions about the human condition, seeking to comprehend the complexities of our emotional landscapes and the mysteries of human behavior. In the relational framework, we recognize that our lives are inextricably intertwined with others and with the non human environment. It is through our relationships that we gain insights into our innermost selves, and to our relationship with the world around us.

We live immersed in different layers of experience. Early upbringing, family, our ancestors, cultural heritage, environment, the social surround, our country of origin and residence, skin color, education, and our personal and transgenerational histories shape us as unique individuals, contributing to our unique subjectivity that is put into play in each analytical encounter.

The Mayan concept of "home" was deeply intertwined with spirituality, community, and the natural environment. A sacred space where the past, present, and future converged, fostering a strong sense of identity and belonging within the larger Mayan civilization.

Yucatan, with its rich history and diverse cultural heritage, offers a fitting backdrop for our explorations. This region has been a cradle of ancient civilizations, each leaving behind traces of their longing for belonging, be it through sacred sites, artistic expressions, or familial ties. As we gather on this sacred land, we are reminded of the universality of human experience and the shared yearning for a place to call "home."

The nature of our world is marked by relentless uncertainty, and our understanding of home, belonging, culture, and even the self, is ever-evolving. Climate challenges, rapid societal changes, technological advancements, and the constant blending of diverse cultures give rise to novel challenges that demand new insights and innovative therapeutic approaches.

This conference will offer a dynamic space for dialogue and learning. The emphasis on embracing cultural and emotional heritage as integral parts of the human experience will enrich our discussions and provide valuable insights into the intricate tapestry of human connections.

We look forward to seeing you in Merida.

Adriana Cuenca Carrara, PhD and Berta Loret de Mola, PhD
CONFERENCE CHAIRS, 2024

LOCATION AND ACCOMMODATIONS

The 2024 Conference will take place at the **Hyatt Regency Merida**. Located in the heart of the city, the hotel in Merida, Yucatan, is a key point where the commercial area and the tourist area of the city converge. It is located near the United States Embassy and the emblematic Paseo de Montejo.

The Hyatt Regency is offering IARPP conference attendees' special conference rates of approximately \$180.00 USD (\$3,085.60 MXN)/single including breakfast exclusive of applicable state and local taxes. All reservations must be made, modified or canceled individually through **Hotel's Reservation Department** by calling +52 999 942 1234, sending an email to merid.reservations@hyatt.com from Monday to Saturday, from 9:00 to 18:00 hrs, or 1-800-233-1234 and referring to **THE IARPP 2024 CONFERENCE**. Reservations for rooms accessible to guests with disabilities may be made in the same manner. The Group Rate is available on or before **May 31, 2024** or until all rooms in the group have been reserved, whichever occurs first. You can make a reservation after this date, but will not be guaranteed the group rate. A credit card deposit is required at the time of reservation.

The hotel requires at least 48 hours notice of cancellation to receive a refund. BE SURE TO MENTION THE IARPP 2024 CONFERENCE TO RECEIVE THE GROUP RATE

Hyatt Regency Merida

Calle 60 No. 344 por 35 y avenida Colón, Colonia Centro, Mérida, Yucatán 97000 MX

Website: [Hoteles de lujo en Mérida, Yucatan | Hyatt Regency Merida](https://www.hyatt.com/en-US/group-booking/MERID/G-CIPS)

Reservation Link: <https://www.hyatt.com/en-US/group-booking/MERID/G-CIPS>

SPECIAL DISCOUNT AIRFARES



The airlines of SkyTeam, Official Alliance Network for our event, offer attractive airfares for The airlines of SkyTeam, Official Alliance Network for our event, offer attractive airfares for participants. SkyTeam comprises 20 leading international airlines. To book your travel now, visit <http://res.skyteam.com/Search/promoDefault.aspx?vendor=sky&promocode=4769S> and enter your Event ID: 4769S.

REGISTRATION DETAILS

REGISTER ONLINE: www.iarppconference.org

... or by completing and mailing the enclosed Conference Registration Form. Registration for the conference allows attendance at all sessions of the Main Conference, coffee and breakfast rolls on Friday, Saturday and Sunday mornings, and all scheduled coffee breaks. Lunches are on your own.

IARPP is going green! In an effort to reduce paper waste, we will not be printing the brochure and onsite conference materials. The conference app will have everything you need. It may be helpful to download the IARPP 2024 Conference App at: <https://iarpp.ce-go.com/iarpp-conference-2024-mexico>.

To secure your place in your preferred Pre-Conference Workshop and Panel Sessions, early registration is strongly advised. All Panel Session placements will be made strictly on a first-come (paid), first-served basis.

REGISTRATION DETAILS

REGISTRATION (continued)

Early Bird registration will close May 18th, 2024.

All conference registration fees are listed in USD. Registration for the main conference allows attendance at all sessions, all coffee breaks, and the Candidates' and Welcome Reception. Please note that registrations postmarked after May 18th, 2024 will be subject to the regular conference fee. We regret that exceptions cannot be made to allow additional registrants into a Paper Session that has reached its maximum capacity.

REFUND POLICY

If your entire registration must be cancelled, a refund less \$75 administrative fee will be allowed if requested in writing (nilou@km-direct.com) by May 20th, 2024. Cancellations made in writing between May 21st - June 1st, 2024 will be refunded 50% plus the \$75 administrative fee. We regret that cancellations made after June 1st, 2024 will not be accepted. Cancellations on optional ticketed items such as the conference reception will not be accepted after May 20th, 2024.

FOR FURTHER INFORMATION, PLEASE CONTACT:

Nilou Mostofi, Conference Admin

IARPP Conference 2024

3298 Governor Drive, Suite 22270 • San Diego, CA 92192

Phone: (858) 270-3503 • FAX: (888) 280-1476

Email: iarppconference@km-direct.com

About IARPP

For further information about IARPP, please contact:

Elisa Zazzera, Administrator

1270 Broadway, Suite 608, New York, NY 10001

Phone: +1-212-669-6123

Email: office@iarpp.net | www.iarpp.net

The International Association for Relational Psychoanalysis and Psychotherapy is an international association founded in 2001. The association is conceived of as a professional and intellectual community of individuals--clinicians and non-clinicians such as academics--committed to developing relational perspectives and exploring similarities and differences with other approaches to analysis and psychotherapy.

*Sandra Toribio Caballero
President, 2024-2027*

IARPP MEMBERSHIP BENEFITS INCLUDE:

- Online Member Directory
- Participation in IARPP Colloquium Series
- Participation in IARPP Web Seminar Series
- Reduced Rates for IARPP Conferences
- Access to IARPP Colloquium Archives
- Psychoanalytic Dialogues subscription (6 issues/year and includes Free Online Access to all PD archives)
- Discounts for relationally oriented journals and books: (All books from the Relational Book Series of Taylor and Francis; plus Journals such as: JAPA, Psychoanalytic Inquiry, Gender and Sexuality, Psychoanalytic Quarterly, and more)
- IARPP Relational Voices Series
- IARPP Newsletter
- IARPP Members' Listserv

CONTINUING EDUCATION

Complete info in this link: <http://tinyurl.com/2xe5afhw>

Earn up to 22.00 CE Credit Hours for In-Person Attendance

EDUCATIONAL OBJECTIVES

At the conclusion of the conference, participants will be able to:

- **Describe the Psychological Dimensions of 'Home' in Relational Psychoanalysis:** Participants will explore the concept of 'home' beyond its physical definition, focusing on its psychological significance, role in shaping identity, and its influence on interpersonal relationships within the framework of relational psychoanalysis.
- **Examine the Impact of Cultural and Historical Contexts on the Sense of Belonging:** This objective involves a deep dive into how various factors like cultural heritage, social environment, and transgenerational narratives shape an individual's sense of belonging and contribute to their unique subjectivity.
- **Analyze the Interplay Between Individual and Collective Psyches in the Quest for Belonging:** Attendees will investigate how the search for belonging affects both individual and collective psyches, emphasizing the importance of understanding these dynamics in therapeutic settings.
- **Explore Innovative Therapeutic Approaches in a Rapidly Changing World:** The conference will address the need for new therapeutic strategies in response to global challenges such as climate change, technological advancements, and cultural diversity, focusing on adapting psychoanalytic practice to these evolving circumstances.
- **Discuss a Deeper Understanding of Human Connections and Identity Formation:** The objective here is to provide insights into the complex web of human connections and how these relationships contribute to the formation of personal and collective identities, especially in the context of relational psychoanalysis.

In Person Attendance

Each professional is responsible for the individual requirements as stipulated by his/her licensing agency. Please contact your individual licensing board/regulatory agency to review continuing education requirements for licensure renewal. Please note: You must attend "live" (in real-time) to earn CE credits. After the event, you will receive access to your evaluation and continuing education certificate via a personalized "attendee dashboard" link, hosted on the CE-Go website. This link will be sent to the email account you used to register for the event.

Virtual Attendance

Each professional is responsible for the individual requirements as stipulated by his/her licensing agency. Please contact your individual licensing board/regulatory agency to review continuing education requirements for licensure renewal. Please note: You must attend "live" (in real-time) to earn CE credits. Before the event, you will receive an email from CE-Go with access to the virtual event. After the event, you will receive access to your evaluation and continuing education certificate via a personalized "attendee dashboard" link, hosted on the CE-Go website. This link and access to the virtual event will be sent to the email account you used to register for the event. Upon accessing the CE-Go "attendee dashboard," you will be able to:

- Complete evaluation forms for the event
- Download your continuing education certificate in a PDF format

If you have any questions or concerns regarding the CE-Go platform, please contact CE-Go at 888-498-5578 or by email at support@ce-go.com. Please Note: Emails for this event will come from "support@ce-go.com." If you have any continuing education related questions, please contact your event organizer. Please make sure to check your spam/junk folder in case those emails get "stuck". We'd also suggest "Allowlisting" support@ce-go.com. This tells your email client that you know this sender and trust them, which will keep emails from this contact at the top of your inbox and out of the junk folder.

Thursday Optional Half Day Session = 3.0 Hours

Main Conference Program (Thursday--Sunday) = 22.0 Hours

Virtual Conference Program (Thursday--Sunday)* = 10.0 Hours

***Plenaries Only**

CONFERENCE RECEPTION AND TOURS

Saturday Evening Conference Reception

WE INVITE YOU TO JOIN US (for an additional fee) to our **OPTIONAL SATURDAYEVENING CONFERENCE RECEPTION**.

Please see the Conference Registration Form to register.

\$85 USD per person includes 3-course meal, drinks, a signature cocktail, and roundtrip bus transportation

Saturday, June 22nd
8:00 pm – 12:00 am
Almadia Restaurant
Live DJ Music



Conference Tours

WE INVITE YOU TO JOIN US (for an additional fee) to our **CONFERENCE TOURS**.

Please see the Conference Registration Form to register.

Tuesday, June 18th - All Day

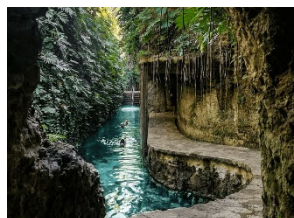
Tour of Hacienda Mucuyche & Uxmal

\$190 USD per person includes roundtrip

Transportation, Historical tour of the hacienda,

swimming tour through the cenotes, and 3-course meal with drinks. The tour ends with a video mapping show with night tour in the archaeological zone of Uxmal.

Further information will be provided closer to the tour.



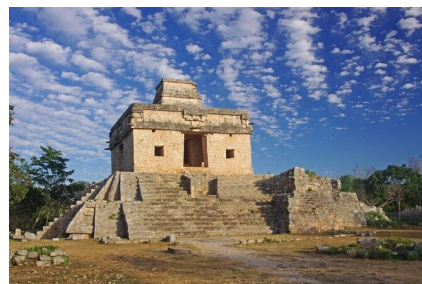
Friday, June 21st – 7:30 pm – 9:30 pm

Tour of Dzibilchaltun

\$50 USD per person includes roundtrip transportation

Guided visit to Dzibilchaltun archaeological site.

Further information will be provided closer to the tour.



THURSDAY, JUNE 20

OPTIONAL PRE-CONFERENCE PROGRAMS

For a full description of pre-conference titles & objectives, please visit: <https://iarpp.ce-go.com/iarpp-conference-2024-mexico>.

7:45am **Registration for Optional Pre-Conference Programs**

8:30am

A. Half-Day: Bearing the Pain, Reaping the Joys of Clinical Practice

Presenter: Sandra Buechler, PhD, USA

B. Half-Day: Embodied Recognition, Affect Regulation, and the Therapeutic Uses of Intersubjectivity

Presenter: Jessica Benjamin, PhD, USA

C. Half-Day: Jung and Relational Psychoanalysis: Clinical, Theoretical and Historical Connections

Presenter: Andrew Samuels, DHL, UK

11:30am **Adjournment of Pre-Conference Half-Day Sessions.**

MAIN CONFERENCE

For a full description of pre-conference titles & objectives, please visit: <https://iarpp.ce-go.com/iarpp-conference-2024-mexico>.

THURSDAY, JUNE 20

12:00pm PAPER/PANEL SESSION A: (8 Concurrent Sessions)

- 1. Embodied Journeys: Navigating Belonging and Homecoming in Analytic Spaces**
Speakers: Tammy Ben Shaul, PhD, Australia, and Deborah Natasha Auer, CPsychol, DCPsych, CSAccred, PG Dip, UK
Interlocutor: Lorraine Caputo, LCSW-R, USA
- 2. The Questions About Our Relational Home in Migration**
Speakers: Diana Margarita Kahn, PhD, Argentina, and Alicia Rojas, MD, USA
Moderator: Paolo Stramba-Badiale, PhD, Italy
- 3. Unraveling the Complexity of Belonging: Navigating Constructs, Confronting Contradictions, Seeking Equality, and Embracing Differences**
Speakers: Amira Simha-Alpern, PhD, ABPP, USA and Jill Gentile, PhD, USA
Interlocutor: Valeria Pulcini, MD, PhD, Italy
- 4. Building Invisible Connections: Implicit Factors and the Pre-Verbal Therapeutic Relationship**
Speakers: Ximena Lecumberri Noriega, MPP, México, and Frances V. Dillon, LMSW, CSW, USA
Interlocutor: Cristina Gomez, México
- 5. Navigating Emotional Landscapes: Clinical Encounters in Diverse Realms**
Speakers: Zvi Yadin, PhD, USA, and Marco Ponta, PsyD, PhD, Italy
Interlocutor: Claudia Villanueva Kuri, PhD, México
- 6. Can We Think Different at Home?**
Speakers: Joan Berzoff, MSW, LICSW, EdD, USA and Amir Hossein Jalali Nadoushan, MD, Iran
Interlocutor: Paula Gorlitz, USA
- 7. Orphans in the Mist: Who Has a Home?**
Speakers: Laura Molet, PhD, Spain and Ruth Lijtmaer, PhD, USA
Interlocutor: Andrea Lerner, Peru
- 8. Dreams in the Intersubjective Encounter: Experiences in Search of a Home**
Speakers: Alice Sommatitis, PsyD, Italy and Roberto Vargas Arreola, PhD, México
Interlocutor: Joan Peters, PhD, USA

1:30pm Adjournment of Paper/Panel A & Coffee Break

2:00pm PAPER/PANEL SESSION B: (8 Concurrent Sessions)

- 1. Echoes of the Analyst Vulnerability**
Speakers: Narjes Bahreini, MA, Iran, and Xiaofeng Long, MA, China
Interlocutor: Montserrat Barragan, MPP, México
 - 2. From Crime Scenes to Co-Creation: Tracing the Contours of Home in Diverse Cultural and Familial Landscapes**
Speakers: Liat Perry Lerer, MSW, Israel, Lili Paraskevi, MSc, Greece, and Minh Truong-George, AuckBA, Dip Psychotherapy, New Zealand
Moderator: Karen Perlman, PhD, LP, NCPsyA, USA
 - 3. Exploring Identity and Analyst-Patient Dynamics in Psychoanalysis**
Speakers: Robert Benedetti, PhD, USA, and Sam Guzzardi, LCSW, USA
Interlocutor: Diego López Cimé, MPP, México
 - 4. Intergenerational Trauma and Spatial Dislocation: A Psychoanalytic Exploration of Home**
Speakers: Shari Appollon, LCSW-R, Haiti/USA, and Gillian Swanson, PhD, UK
Interlocutor: TBD
 - 5. Homeless Self and Homeless Soul**
Speakers: Davide Belluardo, PhD, Italy, and Jessica Graciella Mézquita López, LP, MPP, PhD, México
Interlocutor: Nina Sander, PsyD Candidate, USA
 - 6. Ghosts of Home: Unraveling Hauntings and Healthy Homes**
Speakers: Mamatha Karollil, PhD, India, and Garret Wyner, PhD, PhD, PsyD, USA
Interlocutor: Diane Selinger, PhD, USA
 - 7. Intersecting Paths of Sexual Identity and Spiritual Exploration**
Speakers: Stephen Gee BA Hons, PGCE, UKCP, UK and Barry Magid, MD, USA
Interlocutor: Sara Ampudia, MSW, LCSW, México
 - 8. Reflections and Transformations in Theory and Practice. Different Meanings of Home with Cultural and Social Changes**
Speakers: Silvia Saraceno Fasce, PhD, México, Oliver Lyttelton, PhD, Canada, and Steven Hugh Knoblauch PhD, USA
Moderator: Ángel Luna, PhD, México
- 3:30pm Adjournment of Paper/Panel B
3:30pm Coffee Break
- 4:00pm PLENARY I: Mayan "Home:"
Spirituality, Community, and Identity
Presenters: Ella Fany Quintal Avilés, PhD, México, Nancy Walker, MSc, México, and Indalecio Cardeña Vazquez, MA, México
Interlocutor & Moderator: Sandra Toribio Caballero, PhD, Spain
- 6:00pm Adjournment of Opening Event Plenary I
6:00pm Candidates Reception
7:00pm Opening Conference Reception



FRIDAY, JUNE 21

7:00am Registration & Coffee

8:00am Large Group - ALL ARE WELCOME

Speakers: Stavros Charalambides, MSc, CGP, Greece, and Haim Weinberg, PhD, CGP, USA

9:30am Adjournment of Large Groups

9:45am President's Welcome

Presenter: Sandra Toribio Caballero, PhD, Spain — IARPP President

10:00am PLENARY II: Belonging and Alienation in the World-- and in the Therapy

Presenters: Micha Weiss, PhD, Israel, Peter Shabad, PhD, USA, & Hazel Ipp, PhD, Canada

Interlocutor : Gianni Nebbiosi, PhD, Italy

12:00pm Adjournment of Plenary II

12:00pm Lunch (on your own)

1:30pm PAPER/PANEL SESSION C: (8 Concurrent Sessions)

1. Analytical Struggles in the Face of War and Social Catastrophes

Speakers: Lisa Sandow Lyons, PhD, USA, and Yael Greenberg PsyD, ABPP, USA

Interlocutor: Lizette Kingwergrs, PhD, México

2. Relational Identities, Borders and In-Betweenness in the Therapeutic Space

Speakers: Daniela Flores Rosales, MPsy, MS, LPC, USA and Anne Maxwell, PhD, México

Interlocutor: Martha Gilmore, PhD, CGP, USA

3. The Becoming of the Migrant: Intercultural Meetings in the Worlds of Experience

Speakers: Helen Quinones, PhD, USA, and Paulina Roman Mendoza, MA, Spain

Interlocutor: TBD

4. The Borders of Identity in Migrants: Places to be Explored

Speakers: Arnold Rex Kintanar, PsyD, Philippines/USA, and María Paz Ardito, LCP, Chile

Interlocutor: TBD

5. Expanding Horizons: Integrative and Cultural Perspectives in Psychoanalytic Practice

Speakers: Daniel Goldin, MFT, PsyD, USA and Ignacio Blasco Barrientos, PsyD, Spain

Interlocutor: Laura Frigau-London, PsyD, LMSW, Italy

6. The Self of the Migrant in the Therapeutic Space: Accents that Constitute Identity

Speakers: Tara Chivukula, LCSW, USA, and María Javiera Pomés Arroyave, PhD, Spain

Interlocutor: Ramon Mon, PhD, México

7. The Therapeutic Space as Home in Face of Trauma and the Transgenerational

Speakers: Ehoud Chen, MA, Israel, and Tomas Casado-Frankel, MA, LMFT, USA

Moderator: Vardit Zerem Ullman, Israel

8. Trauma and Vulnerability: The Protective Mind in the Therapeutic Space

Speakers: Fabia Eleonora Banella, PhD, PsyD, Italy, Helder Chambel, PhD, Portugal, and Alix Janeth Jurado Tarin, MACP, México

Moderator: TBD

3:00pm Adjournment of Paper/Panel C & Coffee Break

3:15pm PLENARY III: The Heart of Relational Psychoanalysis: Exploring the Concept of "Home" in the Clinical Encounter

Presenters: Anthony Bass, PhD, USA, Margaret Crastnopol, PhD, USA, and Franceso Andreucci, PhD, Italy

Interlocutor: Alejandra Plaza Espinosa, PhD, México

5:15pm Adjournment of Plenary III

5:30pm Discussion Group 1

Co-Leaders: Jose Angel Aguilar, PhD, México, Robert Benedetti, PhD, USA, Ignacio Blasco Barrientos MA, Spain, Martha Gilmore, PhD, CGP, USA, Yael Greenberg, PhD, USA, Lizette Kingwergrs, PhD, México, Judy Kobrick, PhD, Canada, Ruth Lijtmaer, PhD, USA, Maricruz Marrufo, PhD, México, Anne Marie Maxwell, PhD, México, Laura Molet, PhD, Spain, and Eyal Rozmarin PhD, USA

6:30pm Adjournment of Discussion Group 1



SATURDAY, JUNE 22

7:00am Registration & Coffee

8:00am Large Group - ALL ARE WELCOME

Speakers: Stavros Charalambides, MSc, CGP, Greece, and Haim Weinberg, PhD, CGP, USA

9:30am Adjournment of Large Groups

9:30am PLENARY IV: Home as Paradox: Constraint and Growth, the Familiar and the Strange, Binding and Liberation

Presenters: Adriana Cuenca, PhD, México, Berta Loret de Mola, PhD, México, and Robert Grossmark, PhD, USA

Interlocutor: Joyce Slochower, PhD, USA

11:30am Adjournment of Plenary IV & Coffee Break

11:45am Discussion Group 2

Co-Leaders: Jose Angel Aguilar, PhD, México, Robert Benedetti, PhD, USA, Ignacio Blasco Barrientos MA, Spain, Martha Gilmore, PhD, CGP, USA, Yael Greenberg, PhD, USA, Lizette Kingwergrs, PhD, México, Judy Kobrick, PhD, Canada, Ruth Lijtmaer, PhD, USA, Maricruz Marrufo, PhD, México, Anne Marie Maxwell, PhD, México, Laura Molet, PhD, Spain, and Eyal Rozmarin PhD, USA

12:45pm Adjournment of Discussion Group 1 & Lunch (on your own)

2:00pm PAPER/PANEL SESSION D: (8 Concurrent Sessions)

1. Invited Panel: A Path to Belonging: Psychoanalytic Institutes as a Home For Candidates

Speakers: Stefania Baresic, RP, CTP Dip, Canada, Gerardo Perez Alcaraz, MA, México, Sepideh Shirani, MA, Iran

Interlocutor: Mariasilvia Soriato, PsyD, Italy

2. Wandering Between Territories: Identity Shaped by an Unknown Past and Stateless Existence

Speakers: Judi Kobrick, PhD, CPsych, and Canada, Ilene Philipson, PhD, PhD, USA

Moderator: TBD

3. Home Invasion: Transgressions, Betrayals, and Body Snatchers

Speakers: Annee Ackerman, PhD, USA and Jean Petrucelli, PhD, CEDS-S, USA

Interlocutor: TBD

4. Complicating our Stories of Home: Risking Intimacy, Examining Complex Implication

Speakers: Deborah Dowd, LICSW, PsyD, USA, Lauren Levine, PhD, USA, and Rachel Kabasakalian-McKay, PhD, EdM, USA

Moderator: TBD

SATURDAY, JUNE 22 (continued)

- 5. Generative Self-Disclosure: From “Home” to “Human”**
Speakers: Alioscia Boschioli, PsyD, Italy and Milko Prati, PsyD, Italy
Interlocutor: Joy Dryer, PhD, USA
- 6. Rethinking Belonging in Psychoanalytic Writing**
Speakers: Stephen Hartman, PhD, USA and Jade McGleughlin, LICSW, USA
Interlocutor: TBD
- 7. Belonging to Self & Other: The Convergent Roles of Spirituality and Psychedelics in Relational Psychoanalysis**
Speakers: Laura D 'Angelo, MDiv, LP, USA and Pilar Jennings, PhD, USA
Interlocutor: TBD
- 8. Relational Psychoanalytic Psychotherapy with Children and Adolescents: The Use of the Play Tent as a Therapeutic “Home”**
Speakers: Kate Karagianni, MA, Greece, and Marilou Kountria, MSc, Greece
Interlocutor: TBD
- 3:30pm Adjournment of Paper/Panel D & Coffee Break**
3:45pm PAPER/PANEL SESSION E: (8 Concurrent Sessions)
- 1. Invited Panel: Building Home Across Development: Clinical Vignettes on Childhood, Adolescence and Adulthood**
Speakers: Paula Rampulla, PhD, USA, and Michael Singer, PhD, USA
Interlocutor: Macarena Lopez, MA, Chile
- 2. Displacement of the Frame / Absence of Home: How Can the Therapeutic Relationship Offer a New Basis for Home?**
Speakers: Lisa Director, PhD, USA and Carina Grossmark, PhD, USA
Interlocutor: Malcolm Slavin, MD, USA
- 3. Home & Belonging: The Relational Homes of Analysis and Analytic Associations**
Speakers: Matt Aibel, LCSW, USA, and Hilary Offman, MD, FRCPC, Canada
Interlocutor: TBD
- 4. The Architecture of Psychic Home: Vignettes from Inside, Outside, and the Spaces In Between**
Speakers: Rachel Altstein, JD, LP, USA, Amy Schwartz-Cooney, PhD, USA and Rachel Sopher, LCSW, USA
Moderator: TBD
- 5. The Body as Home: Two Analysts’ Journeys “Coming Out” to their Patients**
Speakers: Balin Anderson, LCSW, USA and Gabriel DeCicco, LCSW, USA
Interlocutor: Karla Escenaro
- 6. Belonging at Wartime**
Speakers: Nissim Avissar, PhD, Israel and Eyal Rozmarin, PhD, Israel
Interlocutor: TBD
- 7. Activism as a Therapeutic Home**
Speakers: Mehr-Afarin Kohan, MD, FRCPC, USA and Bettina von Lieres, PhD, USA
Interlocutor: Juliet Heeg, LCSW-R, USA

8. Two Sides of the Same Coin: The Tension to Belong in Life Transitions

Speakers: Annita Chatzimichailidi, BSc(PgD), Greece, and Georgios Zachariadis, MSc(PgD), Greece

Interlocutor: TBD

5:15pm Adjournment of Paper/Panel E

5:30pm IARPP Membership Meeting

5:30pm Chapter Meetings

7:00pm CONFERENCE RECEPTION

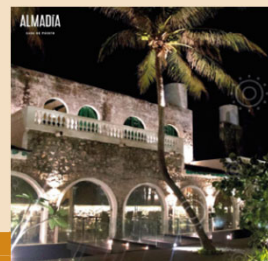
Event is an additional charge. For more information, please see registration form.

JOIN US FOR OUR
SATURDAY NIGHT
CONFERENCE RECEPTION

Almadia Restaurant

8:00 pm – 12:00 am

*Bus departs hotel promptly at 7:30 pm
3-course dinner, drinks, and DJ*



SUNDAY, JUNE 23

7:00am Registration & Coffee

8:30am PAPER/PANEL SESSION F: (7 Concurrent Sessions)

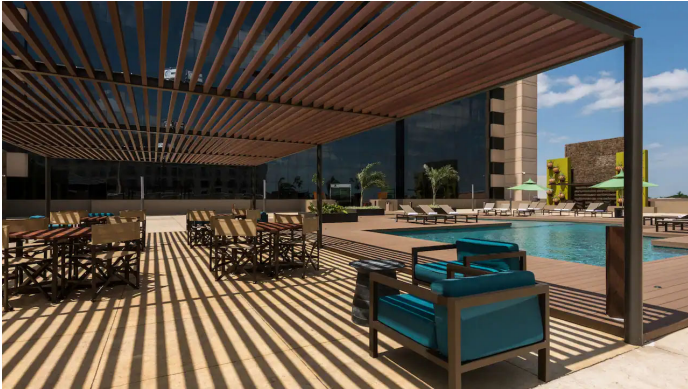
- 1. Exploring Home and Identity: The Intellectual Misanthrope and the Analytic Space**
Speakers: Andrea Rihm, MA, PhD, Chile and Bruce Herzog, MD, FRCPC(C), Canada
Interlocutor: Elena Ortiz, PhD, México
- 2. Finding a home as an Immigrant: Loss, Trauma and Transformation**
Speakers: Liat Tsuman, PhD, USA, and Lilly Pavlinovic, PhD, USA
Interlocutor: TBD
- 3. Relational Psychoanalytic and Group Analytic Approaches as a Bridge Regarding Oppositional Ethnic Groups: A Social Unconscious Perspective**
Speakers: Stavros Charalabides, MSc, CGP, Greece, and Haim Weinberg, PhD, CGP, USA
Interlocutor: TBD

SUNDAY, JUNE 23 (continued)

4. **Rescue Fantasies and Psychoanalytic Seductions: Risking the Longing to Belong**
Speakers: Sarah Schoen, PhD, USA and Sandra Silverman, LCSW, USA
Interlocutor: Michelle Shubin, LCSW, BCD, USA
5. **Impact of the Analyst's Sense of Belonging on the Therapeutic Relationship**
Speakers: Rosario Castano, PsyD, Spain and Ricardo Gallego, MD, PhD, Spain
Interlocutor: Holly Levenkron LCSW, LICSW USA
6. **The Quiet Renaissance of Psychoanalysis: Paradigmatic Psychoanalytic Psychosomatic Shifts**
Speakers: Mary P. Curry, PhD, LCSW, USA and Peter McKay, Grad Dip, Australia
Interlocutor: TBD
7. **When Our Home Becomes an Ominous Place**
Speakers: Victor Donas, MD, Chile and Juan Francisco Jordan, MD, Chile
Interlocutor: TBD

SUNDAY, JUNE 23 (continued)

8. **Community and Social Dynamics in Psychoanalysis**
Speakers: Amber Kelly, PhD, MSW, LCSW, USA, Gerard Webster PhD, PsyD, Australia, and Christell Anais Febles Burgos, MA, México
Moderator: Brandon Beeler, PsyD, USA
- 10:00am **Adjournment of Paper/Panel F & Coffee Break**
- 10:30am **PLENARY V: Under Assault. Experiencing Dread and Seeking Hope**
Presenters: Susanna Federici Nebbiosi, PhD, Italy, Elizabeth Allured, PsyD, USA, and Roger Orellano, PhD, México
Interlocutor: Margaret Black, LCSW, USA
- 12:30pm **Conference Closing Remarks**
- 12:45pm **CONFERENCE ADJOURNS**



IARPP 2024 CONFERENCE REGISTRATION FORM

4 WAYS TO REGISTER! **ONLINE** www.iarppconference.org **BY FAX** +1-888-280-1476 **BY PHONE** +1-858-270-3503 **BY MAIL** 3298 Governor Dr., Ste. 22270, San Diego, CA 92192

PLEASE PRINT OR TYPE

Last Name: _____ First Name: _____ Degree(s): _____

Address: _____

City: _____ State: _____ Postal Code: _____ Country: _____

Phone Number: (____) _____ Fax Number: (____) _____ Email: _____

Profession: _____ State/Professional License No.: _____ (for CE Certificate)

OPTIONAL PRE-CONFERENCE: By or On May 18th After May 18th
 Member \$60 \$110
 Non-Member \$100 \$140

Thursday, Pre-Conference session selection:

1st Choice _____ 2nd Choice _____

MAIN CONFERENCE REGISTRATION FEES

CATEGORY 1: USA By or On May 18th After May 18th
 Member \$480 \$530
 Non-Member \$540 \$590
 Candidate/Academic* \$380 \$430
 Candidate Non-Member* \$420 \$470
 Students* \$250 \$260
 Student Non-Member* \$260 \$310

CATEGORY 2: Countries Other Than The USA

By or On May 18th After May 18th
 Member \$400 \$450
 Non-Member \$450 \$500
 Candidate/Academic* \$310 \$360
 Candidate Non-Member* \$360 \$400
 Students* \$200 \$250
 Student Non-Member* \$250 \$290

Main Conference Paper/Panel Session Choices

Indicate your preferred choice and one alternative for EACH Session:

Thursday Afternoon Paper/Panel Session A:

1st Choice _____ 2nd Choice _____

Thursday Afternoon Paper/Panel Session B:

1st Choice _____ 2nd Choice _____

Friday Morning Paper/Panel Session C:

1st Choice _____ 2nd Choice _____

Saturday Morning Paper/Panel Session D:

1st Choice _____ 2nd Choice _____

Saturday Afternoon Paper/Panel Session E:

1st Choice _____ 2nd Choice _____

Sunday Morning Paper/Panel Session F:

1st Choice _____ 2nd Choice _____

ONLINE REGISTRATION FEES—PLENARIES ONLY

Member – USA \$300
 Member – Countries Other Than The USA \$260
 Non-Member \$350
 Students \$230

**PLEASE NOTE: Candidate/Academic and Student registrations must be accompanied by a letter from the Training Director verifying status. Photocopies of Student IDs are also accepted.*

OPTIONAL & TICKETED FEES

Tuesday Tour of Hacienda Mucuyche & Uxmal QTY: ___ x \$190

Friday Tour of Dzibilchaltun QTY: ___ x \$50

Optional Reception Ticket QTY: ___ x \$85 At the Conference \$95

FEE TOTALS:

Optional Pre-Conference Programs \$ _____
 Main Conference Fee \$ _____
 Online Plenary Registration \$ _____
 Optional Reception Tickets: QTY: ___ x \$85 = \$ _____
 Optional Tuesday Tour Tickets: QTY: ___ x \$190 = \$ _____
 Optional Friday Tour Tickets: QTY: ___ x \$50 = \$ _____

(A \$75.00 U.S. fee will be assessed for returned checks.)

TOTAL AMOUNT DUE

Check Enclosed. Payable to: IARPP \$ _____

Bill my **Credit Card:** VISA MasterCard AMEX

Account #: _____

Exp. Date: _____ 3- or 4-Digit Security Code#: _____
 (on back for MC or VISA, on front for AMEX)

Signature: _____

Street Address on Credit Card Billing

City, State or Province, Country, Zip/Postal Code:

Will you need any special assistance at the conference?

Please list your needs: _____

Mail to: IARPP 2024

3298 Governor Drive, Suite 22270 • San Diego, CA 92192
Phone: +1-858-270-3503 • Fax: +1-888-280-1476
 A \$75.00 U.S. fee will be assessed for returned checks. Only checks linked to a US bank can be accepted.

NOTE: Please make hotel reservations directly with:

Hyatt Regency Merida

Calle 60 No. 344 por 35 y avenida Colón, Colonia Centro
 Mérida, Yucatán 97000 MX

Website: Hoteles de Lujo en Mérida, Yucatan | Hyatt Regency Merida

Phone: +52 999 942 1234 Reservations: +52 999 942 1234