



International Association for Relational Psychoanalysis & Psychotherapy (IARPP)

IARPP 18<sup>TH</sup> ANNUAL CONFERENCE

**Expanding Our Clinical Experiences:  
The Spoken, Unspoken, and Unspeakable in  
Relational Psychoanalysis and Psychotherapy**

Thursday, June 18 – Sunday, June 21, 2020

THE LUSKIN CONFERENCE CENTER

LOS ANGELES, CA, USA



**Conference Chairs:**

Philip Ringstrom, PhD, PsyD; Ilene Philipson, PhD, PhD; and Hazel Ipp, PhD

DEAR COLLEAGUES,

As our relational theories move us beyond the “talking cure” toward the unspoken and the implicit, the clinical encounter can seem both infinite in possibility and, simultaneously, unmoored. It challenges us to wonder how we navigate the verbal and nonverbal, the perceptual and experiential and what is permissible and impermissible in our clinical work. Drawing on more established as well as emerging insights from the multiple analytic perspectives within our comparative “big tent,” we will gather in Los Angeles to promote a clinically

grounded, multi-generational conversation. By listening closely together to both the drama of specific clinical moments and the stories of patients and therapists deeply entwined in the ongoing therapeutic relationship, we hope to challenge and enlarge our vision of relational psychoanalysis today and for the future.

We look forward to seeing you in Los Angeles.

*Philip Ringstrom, Ilene Philipson, and Hazel Ipp*  
CONFERENCE CHAIRS, 2020

## LOCATION AND ACCOMMODATIONS

The 2020 Conference will take place at the **Luskin Conference Center**. Every element of the UCLA Meyer and Renee Luskin Conference Center and its adjoining hotel in Los Angeles was designed to honor the intrinsic link between innovation and rejuvenation. A LEED Platinum-certified property enhanced by leading edge resources, the UCLA Luskin Conference Center’s bright and relaxing environment encourages open engagement. Here, leading academic minds, medical innovators, researchers, political leaders and social visionaries meet to exchange ideas that will move our world forward.

Surrounded by iconic UCLA landmarks and just steps from the Ronald Reagan Medical Center, the Luskin Conference Center pulses with the energy of a vibrant campus community by day. By night, its accommodations offer a comfortable place to recharge, defining it as one of the premiere hotels in Westwood. With more than 25,000 square feet of versatile, thoughtfully-executed event space, this UCLA hotel sets a higher bar for Los Angeles meeting spaces. **The Luskin Conference Center** is offering IARPP conference attendees’ **special conference rates of \$279/ single or double** exclusive of applicable state and local taxes.

To make a reservation, please click on this link:

<https://reservations.travelclick.com/99861?groupID=2433505&hotelID=99861#/guestsandrooms>.

Those requesting pre or post nights outside of the dates outlined on the reservation link can also contact the hotel directly by calling **(855) 522-8252** and asking for the reservations department. To confirm your reservation, contact the hotel directly at (855) 522 – 8252. A first night’s room deposit or credit card will guarantee your reservation. The hotel requires at least 48 hours notice of cancellation to receive a refund. **BE SURE TO MENTION THE IARPP 2020 CONFERENCE TO RECEIVE THE GROUP RATE!** The group rate is available until **May 17, 2020** or until all rooms in the group have been reserved, whichever occurs first. You can make a reservation after this date, but will not be guaranteed the group rate.

### Luskin Conference Center

425 Westwood Plaza, Los Angeles, CA 90095

Website: <http://www.LuskinConferenceCenter.UCLA.edu/>

Reservation Link: <https://reservations.travelclick.com/99861?groupID=2433505&hotelID=99861#/guestsandrooms>

## SPECIAL DISCOUNT AIRFARES



The airlines of SkyTeam, Official Alliance Network for our event, offer attractive airfares for participants. SkyTeam comprises 20 leading international airlines: Aeroflot, Aerolíneas Argentinas, Aeroméxico, Air Europa, Air France, Alitalia, China Airlines, China Eastern, China Southern, Czech Airlines, Delta Air Lines, Kenya Airways, KLM Royal Dutch Airlines, Korean Air, Middle East Airlines, Saudia, TAROM, Vietnam Airlines and Xiamen Air.

To book your travel now, visit [www.skyteam.com/GlobalMeetings](http://www.skyteam.com/GlobalMeetings) and enter your Event ID: **4264S**. Or, use the unique booking URL: <http://res.skyteam.com/Search/promoDefault.aspx?vendor=sky&promo-code=4264S>.

## SPECIAL DISCOUNT CAR RENTAL

**AVIS** Avis has been appointed the official car rental company for the **IARPP 2020 Conference**. Special discounted rates are available up to one week before and one week after the dates of the meeting. Be sure to protect your reservation needs by making a reservation at least two weeks in advance.

To make a reservation, phone: **Avis Meeting Services Desk at 1-800-331-1600** (From anywhere in the U.S. or Canada). **Be sure to mention the Avis Worldwide Discount (AWD) Number is G028659. You must have this authorization number in order to make the reservation.**

## EDUCATIONAL OBJECTIVES AND CONTINUING EDUCATION

This conference is intended for psychoanalysts, psychiatrists, psychologists, social workers, psychiatric nurses, marriage and family counselors, and clinical professional counselors. The conference is organized to facilitate maximum opportunity for questions, comments and dialogue between the audience and the presenters, allowing clinicians to engage in an extensive variety of topics relevant to the field.

### EDUCATIONAL OBJECTIVES

At the conclusion of the conference, participants will be able to consider:

- The role of Relational analysis in transcending the traditional psychoanalytic “talking cure” by addressing much more than the spoken language aspect of the treatment
- The multitude of therapeutic activity revealed in both the implicit and explicit communication of what is spoken, unspoken and unspeakable
- The unique forms of engagement in the psychoanalytic field in terms of its implicit, co-creatively evolving drama, its narrative tales, and how these can be addressed in ways beyond mere interpretation
- How Relational Psychoanalysis presents a theoretical and clinical “big tent” applicable to all forms of psychoanalytic treatment
- How Relational Psychoanalysis plays a critical role in adapting to the 21 Century, the complexities of its radically transforming cultural, and its manifestation in profoundly novel and unfamiliar forms of media expression.

### CONTINUING EDUCATION

CE Learning Systems, LLC is approved by the American Psychological Association to sponsor continuing education for psychologists. CE Learning Systems maintains responsibility for this program and its content. CE credit will be available to social workers pending approval for conference by NASW.

The International Association for Relational Psychoanalysis and Psychotherapy (IARPP) is recognized by the New York State Education Department’s State Board for Social Work as an approved provider of continuing education for licensed social workers #SW-0202.

The International Association for Relational Psychoanalysis and Psychotherapy (IARPP) is recognized by the New York State Education Department’s State Board for Mental Health Practitioners as an approved provider of continuing education for licensed marriage and family therapists. #MFT-0070.

The International Association for Relational Psychoanalysis and Psychotherapy (IARPP) is recognized by the New York State Education Department’s State Board for Mental Health Practitioners as an approved provider of continuing education for licensed psychoanalysts. #P-0037.

If you have any questions about CE credits, please contact Lucia Lezama at [llezama@iarpp.net](mailto:llezama@iarpp.net).

Continuing Education Hours will be awarded as follows:

Thursday Optional Half Day Session = 3.0 Hours

Main Conference Program (Thursday - Sunday) = 22.0 Hours

## CONFERENCE REGISTRATION, SESSION SELECTIONS, CONFERENCE PAPER RENTAL, AND REGISTERING FOR THE CONFERENCE RECEPTION

### REGISTRATION

**REGISTER ONLINE:** [www.iarppconference.org](http://www.iarppconference.org)

... or by completing and mailing the enclosed Conference Registration Form. Registration for the conference allows attendance at all sessions of the Main Conference, coffee and breakfast rolls on Friday, Saturday and Sunday mornings, and all scheduled coffee breaks. Lunches are on your own.

**IARPP is going green!** In an effort to reduce paper waste, we will not be printing the brochure and onsite conference materials. The conference app will have everything you need. It may be helpful to download the IARPP 2020 Conference App at: [https://whova.io/portal/ieoce\\_202006/](https://whova.io/portal/ieoce_202006/). Once registered, you will be added to the app and further instructions will be emailed.

**Early registration is strongly advised** to ensure a place in your preferred Paper Sessions. Saturday afternoon Session assignments will be made strictly on a first-come (paid), first-served basis. Please refer to the program and indicate your selections on the Conference Registration Form. Submit your completed Conference Registration Form with your check or credit card information **no later than May 17<sup>th</sup>, 2020** to be eligible for the early registration fees. Please note that registrations postmarked **after May 17<sup>th</sup>, 2020** will be subject to the regular conference fee. **We regret that exceptions cannot be made to allow additional registrants into a Paper Session that has reached its maximum capacity.**

### ELECTRONIC PAPER PACKET RENTAL

To aid you in your conference experience, for an additional fee, optional presentation papers **MAY BE ORDERED ON THE CONFERENCE REGISTRATION FORM** for you to read during the paper session. Only those presenters who approved distribution of their papers will be available for rent. Requests for these papers **MUST BE MADE IN ADVANCE OF THE CONFERENCE**. ALL PAPERS WILL BE SENT ELECTRONICALLY TO YOUR SMART PHONE PRIOR TO THE SESSION AND DELETED RIGHT AFTER. TRANSFERRING OR SAVING SUCH PAPERS IS NOT ALLOWED.

### REFUND POLICY

If your entire registration must be canceled, a refund less \$75 administrative fee will be allowed if requested in writing by May 24<sup>th</sup>, 2020. Cancellations made in writing between May 24<sup>th</sup> – June 1<sup>st</sup>, 2020 will be refunded 50% plus the \$75 administrative fee. We regret that cancellations made after June 1<sup>st</sup>, 2020 will not be accepted. Cancellations on optional ticketed items such as the conference reception will not be accepted after May 24<sup>th</sup>, 2020.

### FOR FURTHER INFORMATION, PLEASE CONTACT:

**Nilou Mostofi, Conference Manager,  
IARPP Conference 2020**

3298 Governor Drive, Suite 22270 • San Diego, CA 92192

**Phone: (858) 270-3503 • FAX: (888) 280-1476**

**Email: [iarppconference@km-direct.com](mailto:iarppconference@km-direct.com)**

## SATURDAY EVENING CONFERENCE RECEPTION

WE INVITE YOU TO JOIN US (for an additional fee) to our **OPTIONAL SATURDAY EVENING CONFERENCE RECEPTION**. Join us for our Saturday night gala party under the stars on the Luskin Center's Centennial Terrace for food, drinks, and dancing to LA's renowned Captain Cardiac and the Coronaries, with ample space for conversation and enjoyment of one of LA's warm summer evenings. This event is cosponsored by the Institute of Contemporary Psychoanalysis in Los Angeles. Please see the Conference Registration Form for **ADDITIONAL** information.

### About IARPP

For further information about IARPP, please contact:

Elisa Zazzera, Administrator

1270 Broadway, Suite 1109, New York, NY 10001

Phone: +1-212-669-6123

Email: [office@iarpp.net](mailto:office@iarpp.net) | [www.iarpp.net](http://www.iarpp.net)

The International Association for Relational Psychoanalysis and Psychotherapy is an international association founded in 2001. The association is conceived of as a professional and intellectual community of individuals—clinicians and non-clinicians such as academics—committed to developing relational perspectives and exploring similarities and differences with other approaches to analysis and psychotherapy.

Steven Kuchuck, DSW  
President, 2018-2021

#### IARPP MEMBERSHIP BENEFITS INCLUDE:

- Online Member Directory
- Participation in IARPP Colloquium Series
- Participation in IARPP Web Seminar Series
- Reduced Rates for IARPP Conferences
- Access to IARPP Colloquium Archives
- Psychoanalytic Dialogues subscription (6 issues/year and includes Free Online Access to all PD archives)
- Discounts for relationally oriented journals and books: (All books from the Relational Book Series of Taylor and Francis; plus Journals such as: JAPA, Psychoanalytic Inquiry, Gender and Sexuality, Psychoanalytic Quarterly, and more)
- IARPP Relational Voices Series
- IARPP Newsletter
- IARPP Members' Listserv

## THURSDAY, JUNE 18

### OPTIONAL PRE-CONFERENCE PROGRAMS

For a full description of pre-conference titles & objectives, please visit [iarpp.net/events-hub-page/upcomingconference/](http://iarpp.net/events-hub-page/upcomingconference/).

**7:45 am Registration for Optional Pre-Conference Programs**

**8:30 am**

- A. Half-Day: Psychoanalysis on TV: The Making of the Documentary Couples Therapy**  
**Presenters:** Orna Guralnik, PsyD, USA and Virginia Goldner, PhD, USA  
**Show directors:** Josh Kriegman, USA; Elyse Steinberg, USA; and Eli Despres, USA  
**Interlocutor:** Spyros Orfanos, PhD, USA
- B. Half-Day: The Performing Art of Therapy**  
**Presenter:** Mark O'Connell, LCSW-R, MFA, USA
- C. Half-Day: Psychoanalysis, the Freedom of Speech, the Emancipatory Movement of Desire**  
**Presenter:** Jill Gentile, PhD, USA  
**Moderator & Interlocutor:** Rachel Sopher, LCSW, USA
- D. Half-Day: Enactments in Child-Adolescent Relational Psychotherapy: Challenges and Opportunities of Interactive Regulation**  
**Chair:** Ann Marie Sacramone, MEd, USA  
**Presenters:** Carmen Domingo Peña, PhD, Spain; Shiho Ike, MA, Japan; and Laurel Silber, PsyD, USA  
**Interlocutors:** Gerard Webster, PhD, PsyD, Australia; and Raimundo Guerra Cid, PhD, Spain
- E. Half-Day: Writing the Unspoken and Unspeakable: A Clinical Writing Workshop**  
**Presenter:** Suzi Naiburg, PhD, LICSW, USA

**11:30 am Adjournment of Pre-Conference Half-Day Sessions.**

## MAIN CONFERENCE

For a full description of pre-conference titles & objectives, please visit [iarpp.net/events-hub-page/upcomingconference/](http://iarpp.net/events-hub-page/upcomingconference/).

## THURSDAY, JUNE 18

### 12:00pm PAPER/PANEL SESSION 1: (12 Concurrent Sessions)

- 1. Speaking the Unspeakable; Confronting Our Professional Destructiveness**  
**Speakers:** Joyce Slochower, PhD, ABPP, USA; and Stephen Hartman, PhD, USA  
**Discussant:** Sue Grand, PhD, USA  
**Moderator:** Jamie Rodin, LCSW, PsyD, USA
- 2. The Analyst's Experience of Love, Loss, Regret, and Gender**  
**Speakers:** Marc Rehm, PhD, USA; David Braucher, LCSW, PhD, USA; and Tarun Vohra, MA, India  
**Moderator:** Larry Brooks, PhD, USA
- 3. Autism, Difference and Disability**  
**Speakers:** Manuela Tosti, PsyD, Italy; Daniel Posner, MD, USA; and German Cheung, PsyD, USA  
**Moderator:** Richard Inglis, MBBS, MA, Australia
- 4. The Tango of Eros and Thanatos on the Relational Dancefloor**  
**Speakers:** Faidra Grammenou, PgDip, MSc, Greece; Matina Kaidantzi, PgDip, Greece; and Kostas Mathioudis, MA, Greece  
**Moderator:** Deborah Dowd, LICSW, USA
- 5. Varieties of Play and Playfulness in the Clinical Setting**  
**Speakers:** Giselle Gos, PhD, Canada; Sean Meggeson, MA, RP, Canada; Judi Kobrick, PhD, Canada; and Sam Guzzardi, LCSW, USA  
**Moderator:** Sona DeLurgio, PsyD, LMFT, USA
- 6. From Meaningless Words to Meaningful Actions: Sleeping, Stitching, and Packing Heat**  
**Speakers:** Hilary Offman, MD, FRCPC, Canada; Matt Aibel, LCSW-R, USA; and Laura D'Angelo, MDiv, LP, USA  
**Moderator:** D. Bradley Jones, PsyD, LCSW, USA
- 7. Immigration and Asylum: The Ethical Response**  
**Speakers:** Margy Sperry, PsyD, USA and Paula Rampulla, PhD, USA  
**Interlocutor & Moderator:** Bettina von Lieres, PhD, Canada
- 8. Unsilencing Unspeakable Socio-historical Trauma in Individual, Social, and Institutional Contexts**  
**Speakers:** Ruth Lijtmaer, PhD, USA; George Bermudez, PhD, PsyD, USA; and Victoria Gutierrez-Kovner, PsyD, LCSW, USA  
**Interlocutor & Moderator:** Mary Walters, LCSW, PsyD, USA
- 9. Dimensions of Pain and Suicide**  
**Speakers:** Joye Weisel-Barth, PhD, PsyD, USA; Kristen Melnyk, MD, USA; and Laura Molet Estaper, PsyD, Spain  
**Moderator:** Mark Winitsky, PsyD, USA
- 10. Power and Envy in Individual and Group Practice**  
**Speakers:** Alkinoi Lala, MSc, Greece; Konstantinos Mouchalos, PgD, Greece; and Dimitrios Geranios, BSc, Greece  
**Moderator:** Gita Zarnegar, PhD, PsyD, LMFT, USA
- 11. The Unspoken and Unspeakable in Psychotherapy as Reflecting Social Unconscious Un-discussed Issues**  
**Speakers:** Emi Ibi, MA, Japan; and Piyali Chakrabarti, PsyD, MPhil, Singapore  
**Discussant & Moderator:** Haim Weinberg, PhD, USA
- 12. Individuality and the Transcendence of Categorization**  
**Speakers:** Susana Martinez, PhD, LP, USA; Luis Raimundo Guerra Cid, PhD, Spain; and Floriana Irtelli, PhD, Italy  
**Moderator:** Debra Myers, MD, USA

1:30pm Adjournment of Paper/Panel Session 1

1:30pm Coffee Break

### 2:00pm PAPER/PANEL SESSION 2: (12 Concurrent Sessions)

- 1. Subjectivities Beyond: Trans-Subjectivity and the Inter-Subject**  
**Speakers:** Francisco Gonzalez, MD, USA and Eyal Rozmarin, PhD, USA  
**Discussant & Moderator:** Victor Doñas, MD, Chile
  - 2. The Analyst's Presence in Intersubjective Relating**  
**Speakers:** Nicoletta Agostini, PhD, Italy; Alessia D'Alterio, PhD, Italy; Teresa Isabel Correa, PhD, Argentina  
**Interlocutor & Moderator:** Mark Gerald, PhD, USA
  - 3. Mind-Brain-Bodies in Treatment**  
**Speakers:** Steven Tublin, PhD, USA; Clara Mucci, PhD, Italy; and Andrew Ntsove, MD, MSc, Australia  
**Interlocutor & Moderator:** Judith Pickles, PhD, PsyD, USA
  - 4. From the Inside Out: Three Approaches to Embodied Treatment with Children And Adolescents**  
**Speakers:** Seth Aronson, PsyD, USA; Susan Goodman, LCSW, USA; and Francesca Schwartz, PhD, USA  
**Moderator:** Elyn Freedman, MSW, PsyD, USA
  - 5. Therapeutic Change: Creative Relational Interventions**  
**Speakers:** Peter McKay, BA, Grad Dip Som Psych, Australia; Giancarlo Dimaggio, MD, Italy; Giuseppe Magistrale, PsyD, Italy; Carol Mayhew, PhD, PsyD, USA  
**Moderator:** Jane Jordan, PsyD, USA
  - 6. The Frame and the Setting: Innovative Approaches**  
**Speakers:** Olivia Mandelbaum, PhD, USA; and Karen Perlman, PhD, LP, USA  
**Discussant:** Anthony Bass, PhD, USA  
**Moderator:** Van DeGolia, MD, USA
  - 7. Psychic Citizenship: Linking Self, Group, and Society**  
**Speakers:** Andrew Samuels, UK; Billie Pivnick, PhD, USA; and Jane Hassinger, LCSW, DCSW, USA  
**Moderator:** Billie Pivnick, PhD, USA
  - 8. Reckoning with Heteronormativity: Redressing the Maternal/Paternal Binary and Reworking Oedipal Theory for LGBTQ Couples, Families and Single Parents**  
**Speakers:** Shelley Nathans, PhD, USA; and Emily Seidel, PsyD, USA  
**Discussant & Moderator:** Julie Leavitt, MD, USA
  - 9. Trauma, Abuse, and Dissociation**  
**Speakers:** Rebecca Silvia Rossi, PhD, Italy; Mattia Ferro, PhD, Italy; Koichi Yokoi, MD, Japan; Alejandra Plaza Espinosa, PhD, Mexico  
**Moderator:** Gerard Webster, PhD, PsyD, Australia
  - 10. Migrating Desire: Unspoken Pleasures, Prohibitions, and Possibilities**  
**Speakers:** Lauren Levine, PhD, USA; Sandra Silverman, LCSW, USA; and Janine de Peyer, LCSW, USA  
**Moderator:** Susan Mendenhall, MSW, PsyD, USA
  - 11. Becoming a Self in One's Own Right**  
**Speakers:** Carolyn Schaefer, LCSW-R, USA; Joan Friedman, PhD, USA; and Darren Haber, PsyD, MFT, USA  
**Interlocutor & Moderator:** Celeste Birkhofer, PhD, PsyD, USA
  - 12. Aspects of Supervision**  
**Speakers:** Ayushi Madan, MA, India; Janna Sandmeyer, PhD, USA; and Dana Charatan, PsyD, USA  
**Interlocutor & Moderator:** Barbara Pizer, EdD, USA
- 3:30pm Adjournment of Paper/Panel Session 2
- 3:30pm Coffee Break
- 4:00pm PLENARY I: American Dream?: The Diversity, Creativity and Calamity of Los Angeles
- Presenters:** Estelle Shane, PhD, USA; Glen Gabbard, MD, USA; and Ilene Philipson, PhD, PhD, USA  
**Interlocutor & Moderator:** Christina Emanuel, MFT, PsyD, USA
- 6:00pm Adjournment of Opening Event Plenary I  
Israeli Chapter Meeting
- 6:00pm Candidates Reception
- 7:00pm Opening Conference Reception

## FRIDAY, JUNE 19

### 7:00am Registration & Coffee

### 8:00am PAPER/PANEL SESSION 3: (11 Concurrent Sessions)

#### 1. Candidates' Panel: Thinking, Participating, and Speaking Outside of the Box

**Speakers:** Sam Guzzardi, LCSW, USA; Michael Melmed, PsyD, USA; Amalia Fernandois, ClinPsych, Chile; and Bettina von Lieres, PhD, Canada

**Discussant:** William Coburn, PhD, PsyD, USA

**Moderator:** Sandra Toribio Caballero, PsyD, Spain

#### 2. Scratching the Surface: What Does How We Look Have to Do With Who We Are?

**Speakers:** Susan Sands, PhD, USA, Sarah Schoen PhD, USA; and Jean Petrucelli, PhD, USA

**Moderator:** Ali Kimmell, LCSW, USA

#### 3. Creative Treatment Modalities

**Speakers:** Giuseppe Leo, MD, Italy; Sarit Lev-Bendov, PsyD, Israel; and Sara Biondi, PsyD, Italy

**Moderator:** Laura Williams, PsyD, USA

#### 4. Resilience and Survival in the Holocaust

**Speakers:** Sophia Richman, PhD, ABPP, USA; Irit Felsen, PhD, USA; and Zipora Rosenberg Schipper, PhD, Israel

**Moderator:** Dorianne Sorter, PhD, USA

#### 5. The Whiteness Taboo: Interrogating Whiteness in Psychoanalysis

**Speakers:** Janie Riley, LMFT, USA; Molly Merson, LMFT, USA; and Ben Ringler, LMFT, USA

**Moderator:** Michelle Sweet, PhD, USA

#### 6. Shame and its Transformation: A Feminist Perspective

**Speakers:** Tammy Ben-Shaul, PhD, Australia; Sarah Pouliot, PhD, USA; and Shoshana Ringel, PhD, USA

**Moderator:** Betsy Cohen, LCSW, PhD, USA

#### 7. Perspectives on Psychic Pain

**Speakers:** Michael Pariser, PsyD, USA; Adam Kaplan, PhD, USA; and Alberto Samperisi, PhD, Argentina

**Moderator:** Martha Gilmore, PhD, CGP, USA

#### 8. Psychoanalytic Knowing: The Explicit and the Implicit

**Speakers:** Paolo Stramba-Badiale, PhD, Italy; Marcia Steinberg, PsyD, USA; and Luciana Maiorino, PhD, Italy

**Interlocutor & Moderator:** Charles Levin, PhD, Canada

#### 9. Silence is Not Just Golden, It Speaks with a Silver Tongue: Listening to, Understanding, and Using the Unspoken

**Speakers:** Frank Summers, PhD, ABPP, USA; Kris Yi, PhD, PsyD, USA; and Kerry Thomas-Anttila, PhD, New Zealand

**Moderator:** Gil Spielberg, PhD, ABPP, USA

#### 10. Transformation and Therapeutic Action

**Speakers:** Brendan McPhillips, MBBS, MD, Australia; Sol Oren, MA, Israel; and Drew Magidoff, PsyD, USA

**Interlocutor & Moderator:** Sue Shapiro, PhD, USA

#### 11. The Unspoken in Violations of Power in the Psychoanalytic World

**Speakers:** Tracy Sidesinger, PsyD, USA; Ginna Clark, PsyD, LPCC, ATR-BC, USA; Roshanak Vahdani, MA, Australia

**Interlocutor & Moderator:** Roberto D'Angelo, PsyD, MBBS, Australia

### 9:30am Adjournment of Paper/Panel 3

### 9:45am President's Welcome

**Presenter:** Steven Kuchuck, DSW, USA – IARPP President

### 10:00am PLENARY II: Three Characters in Search of a Story: Empathy as a Complex Relational Achievement

**Presenters:** Hazel Ipp, PhD, Canada and Malcolm Owen Slavin, PhD, USA

**Interlocutor & Moderator:** Francesco Andreucci, PhD, Italy

### 12:00pm Adjournment of Plenary II

### 12:00pm Lunch (on your own)

### 1:30pm PLENARY III: Mimetic Understanding: The Embodied Dance of Words and Actions

**Presenters:** Susanna Federici, PhD, Italy and Gianni Nebbiosi, PhD, Italy

**Interlocutor & Moderator:** Elizabeth Harvey, PhD, Canada

### 3:30pm Adjournment of Plenary III & Coffee Break

### 4:00pm Discussion Group 1

**Co-Leaders:** Tony Bass, PhD, USA; Adriano Bugliani, PhD, Italy; Adriana Cuenca Carrara, PhD, Mexico; Peggy Crastnopol, PhD, USA; Roberto D'Angelo, PsyD, MBBS, Australia; Sam Gerson, PhD, USA; Francesco Gonzales, MD, USA; Ilana Laor, PhD, Israel; Alejandra Plaza Espinosa, PhD, Mexico; Carmine Schettini, MD, Italy; Joyce Slochower, PhD, USA; and Chana Ullman, PhD, Israel

### 5:15pm IARPP Membership Meeting

### 6:15pm Israeli Chapter Meeting

### 6:15pm Adjournment for the day

## SATURDAY, JUNE 20

### 7:00am Registration & Coffee

### 8:00am PAPER/PANEL SESSION 4: (12 Concurrent Sessions)

#### 1. The Patient's Responsibility to the Analyst: An Implicit and Unspoken Dimension of Clinical Process

**Speakers:** Peter Shabad, PhD, USA and Robert Drozek, LICSW, USA

**Discussant:** Jessica Benjamin, PhD, USA

**Moderator:** Loren Sobel, MD, MS, USA

#### 2. Analytic Love and Eros

**Speakers:** Lisa Lyons, PhD, USA; Erik Fagerberg, MA, LCSW, Sweden; and Louella Dias, PhD, USA

**Interlocutor & Moderator:** Stefanie Glennon, PhD, USA

#### 3. The Relational Body in Analytic Practice and Its Social/ Historical Contexts

**Speakers:** Doris Brothers, PhD, USA; Jack Foehl, PhD, USA; Roger Frie, PhD, PsyD, RPsych, Canada; and Jon Sletvold, PsyD, Norway

**Moderator:** Danny Gellersen, LICSW, USA

#### 4. Relational Ethics

**Speakers:** Simone Drichel, PhD, New Zealand; Garret Wyner, PhD, PhD, PsyD, USA; and Shachaf Bitan, PhD, Israel

**Interlocutor & Moderator:** Bonnie Zindel, LCSW, USA

#### 5. Global Youth: Trauma, Tragedy, and Immigration

**Speakers:** Rebecca Versolato, PhD, Singapore; Georgina Spentzou, PhD, Greece; and Yael Lapidot Druyan, LICSW, JD, Israel

**Discussant:** Malin Fors, Msc, Norway

**Moderator:** Alioscia Boschiroli, PsyD, Italy

#### 6. Carrying Forward the Work of Emmanuel Ghent: International Perspectives

**Speakers:** Deepti Sachdev, PhD, India; Neil Altman, PhD, USA; and Shalini Masih, PhD, India

**Interlocutor & Moderator:** Afarin Kohan, MD, FRCPC, Canada

#### 7. Gender, False Self, and the Unspoken Communications in Japanese Culture: Clinical Implications of a Relational Approach

**Speakers:** Tayoka Imai, MA, Japan; Satoko Imamoto, MA, Japan; and Ayumi Osagawa, MA, Japan

**Interlocutor & Moderator:** Rebecca Harrington, DSW, USA

#### 8. Finitude

**Speakers:** Lissa Schaupp, LCSW, USA; Evelyn Rappoport, PsyD, USA; and Rhonda Sternberg, PhD, USA

**Interlocutor & Moderator:** Peter Maduro, JD, PsyD, PsyD, USA

#### 9. The Spoken and Unspoken in Eating Disorders and Obesity

**Speakers:** Cheryl Goldstein, PhD, USA; and Li Qu, MA, China

**Discussant:** Marie Saba, MA, Peru

**Moderator:** Kathi Magnussen Levin, PhD, PsyD, USA

#### 10. The Sounds of Silence: Erotic and Affective Embodiment in the Analytic Field

**Speakers:** Karen Beard, PhD, USA; Dianne Elise, PhD, USA; and Holly Levenkron, LCSW, LICSW, USA

**Moderator:** Iglis Nancy Rodrigo, BA, Argentina

#### 11. Theoretical Difficulties: How Relationality Enhances our Theories

**Speakers:** David Slattery, MA HIP, UK; George Hagman, LCSW, USA; and Oksana Yakushko, PhD, USA

**Moderator:** Michael Pariser, PsyD, USA

#### 12. What Can and Can't Be Said in Treatment and Supervision

**Speakers:** Margaret Crastnopol, PhD, USA and Sandra Buechler, PhD, USA

**Discussant & Moderator:** Irwin Hirsch, PhD, USA

### 9:30am Adjournment of Paper/Panel Session 4

## SATURDAY, JUNE 20 (continued)

### 10:00am **PLENARY IV: The Emergence of Meaning from Unformulated Experience**

**Presenters:** Donnel Stern, PhD, USA and Philip Ringstrom, PhD, PsyD, USA  
**Interlocutor & Moderator:** Shlomit Yadlin-Gadot, PhD, Israel

### 12:00pm **Adjournment of Plenary IV**

### 12:00pm **Editorial Board Meeting**

### 12:00pm **Lunch (on your own)**

### 1:30pm **Discussion Group 2**

**Co-Leaders:** Tony Bass, PhD, USA; Adriano Bugliani, PhD, Italy; Adriana Cuenca Carrara, PhD, Mexico; Peggy Crastnopol, PhD, USA; Roberto D'Angelo, PsyD, MBBS, Australia; Sam Gerson, PhD, USA; Francesco Gonzales, MD, USA; Ilana Laor, PhD, Israel; Alejandra Plaza Espinosa, PhD, Mexico; Carmine Schettini, MD, Italy; Joyce Slochower, PhD, USA; and Chana Ullman, PhD, Israel

### 2:45pm **PAPER/PANEL SESSION 5: (12 Concurrent Sessions)**

#### 1. **Intersubjectivity, Potential Space, and the Analyst's Transformative Presence**

**Speakers:** Steven Stern, PsyD, USA; Heather Ferguson, LCSW, USA; and Amy Cooney, PhD, USA

**Discussant & Moderator:** Sarah Mendelsohn, LCSW, USA

#### 2. **The Dark Side of the Analyst: Narcissism, Anger, and Discomfort**

**Speakers:** Mariela Andrea Cuello de Cosentino, BA, Argentina; Amalia Rivera, MA, Mexico; and Jose Angel Gil Aguilar, MA, Mexico

**Moderator:** Miriam DeRiso, PhD, USA

#### 3. **A Relational Perspective on the Treatment of Eating Disorders: From Primitive Mental States to the Intersubjective**

**Speakers:** Dana Satir, PhD, CEDS, USA; Karen Rosica, PsyD, USA; and Lynda Chassler, PhD, USA

**Discussant:** Shelley Doctors, PhD, USA

**Moderator:** Francesca Romana Salimei, PhD, Italy

#### 4. **The Clinical Use of Imagery and Metaphor**

**Speakers:** Tanya Anagnostopoulou, PhD, Greece; Rachel Altstein, LP, JD, USA; and Philip Gardner, LCSW-R, USA

**Interlocutor & Moderator:** Lynne Oliva, PsyD, MFT, USA

#### 5. **Borders: Real and Symbolic**

**Speakers:** Valentina Desiderio, PhD, Italy; Adriana Cuenca Carrara, PhD, Mexico; and Limor Kaufman, PhD, USA

**Moderator:** Teimuraz Keshelashvili, BSocSc, MsSc, Canada

#### 6. **Caught Between Desire, Agency and Homelessness: Cultural and Clinical Reflections on Sexual Abuse, Seduction and Dissociation in the Indian Clinic**

**Speakers:** Ashis Roy, PhD, India and Neetu Sarin, PhD, India

**Discussant & Moderator:** Frances Dillon, LMSW, CSW, USA

#### 7. **Therapists and Medically Assisted Procreation (MAP): Observations and Trends Emerging from Empirical Research and Clinical Vignettes**

**Speakers:** Valeria Pulcini, MD, PhD, Italy; Ilaria Merici, PhD, Italy; and Milko Prati, PhD, Italy

**Interlocutor & Moderator:** Andrew Harlem, PhD, USA

#### 8. **Envy and Enactment: Relational Opportunities to Work Through the Unspeakable Fear and Shame**

**Speakers:** Angelica Tsikli, BS, Greece; Carmine Schettini, MD, Italy; and Marilou Kountria, MSc, Greece

**Moderator:** Kati Breckenridge, PhD, PsyD, USA

#### 9. **Unspoken Language: The Perverse, The Traumatic, and The Implicit**

**Speakers:** Iris Lerman, MA, Israel; Maria Jose Mezzera, MA, Chile;

Paula Vera, MA, Chile; and Ilana Laor, PhD, Israel

**Interlocutor & Moderator:** Jeffrey Seitelman, MD, PhD, USA

#### 10. **When Unspoken Mourning Leads to Unspeakable Pain: The Clashing Rocks of Implicit Rage in the Therapeutic Journey to Ithaka**

**Speakers:** Sevasti Gkioka, MSc, Greece; Kyriaki Mertzani, MD, Greece; and Manousia Kypraiou, MSc, Greece

**Moderator:** Robin Cohen, PhD, PsyD, USA

#### 11. **Relational Time: Past, Present, and Future**

**Speakers:** Christopher Bonovitz, PsyD, USA; Daniel Goldin, MFT, PsyD, USA; and Davide Belluardo, PhD, Italy

**Interlocutor & Moderator:** Stuart Pizer, PhD, ABPP, USA

#### 12. **Live Supervision: Exploring Dyadic Affect Regulation in Treatment and Supervision**

**Speakers:** Jacqueline Gotthold, PsyD, USA; Cristina Bonnucci, PsyD, Italy; Fabia Banella, PhD, Italy; and Jenna Davino, LCSW, USA

#### 4:15pm **Adjournment of Paper/Panel Session 5 & Coffee Break**

#### 4:30pm **IARPP Meetings**

**Invited Panel:** Muriel Dimen Fellowship 2020 – An Interdisciplinary Presentation

**Speakers:** Naomi Morganstern, PhD, Canada; and Stephanie Koziej, MPhil

**Moderator:** Hilary Offman, MD, FRCPC, Canada

#### 5:30pm **Adjournment for the day**

#### 6:00pm **CONFERENCE RECEPTION**

*Event is an additional charge. For more information, please see registration form. This event is co-sponsored by the Institute of Contemporary Psychoanalysis in Los Angeles.*

**JOIN US FOR OUR  
SATURDAY NIGHT GALA PARTY  
UNDER THE STARS ON THE LUSKIN CENTER'S  
CENTENNIAL TERRACE  
FOR FOOD, DRINKS, AND DANCING TO  
LA'S RENOWNED  
CAPTAIN CARDIAC AND THE CORONARIES.**



## SUNDAY, JUNE 21

### 8:00am **Registration & Coffee**

### 8:30am **PAPER/PANEL SESSION 6: (12 Concurrent Sessions)**

#### 1. **When Minds Meet: The Work of Lew Aron**

**Speakers:** Samuel Gerson, PhD, USA; Spyros Orfanos, PhD, USA; and Galit Atlas, PhD, USA

**Moderator:** Jessica Benjamin, PhD, USA

#### 2. **Shame, Trauma, and the Analyst's Subjectivity**

**Speakers:** Jean Principe, PhD, USA; Robin Young, PhD, USA; and Konstantina Adamopoulou, MSc, Greece

**Moderator:** Maria Tammone, PhD, Italy

#### 3. **'Fieldwork': Speakable, Unspoken and Unspeakable States from a Bionian Field Theory Perspective**

**Speakers:** Duncan Cartwright, PhD, South Africa and Peter Goldberg, PhD, USA

**Discussant:** Rachael Peltz, PhD, USA

**Moderator:** Marina Amore, PhD, Italy

#### 4. **How Analytic Writing Catalyzes the Implicit, Unspoken, and Unspeakable in the Analyst and the Field**

**Speakers:** Karen Martin, USA; Marcia Dobson, PhD, PhD, USA; and Brenda Solomon, MD, USA

**Moderator:** Suzi Naiburg, PhD, LICSW, USA

#### 5. **Confrontations, Quarrels, and Resistance in Power Dynamics**

**Speakers:** Don Greif, PhD, USA; Malin Fors, MSc, Norway; Rachel Kabasakalian McKay, PhD, EdM, USA; and David Mark, PhD, USA

**Interlocutor & Moderator:** Adriano Bugliani, PhD, Italy

## SUNDAY, JUNE 21 (continued)

### 6. Multiple Identities, Hidden Subjectivities: The Biracial-Upwardly Mobile Psychoanalyst

**Speakers:** Susan Rios, MS, LCSW, USA; and Adam Rodriguez, PsyD, USA

**Discussant:** Veronica Abney, PhD, USA

**Moderator:** Lourdes Casares, PhD, USA

### 7. Challenging the Motherhood Mandate

**Speakers:** Hillary Grill, LCSW, USA; Caryn Sherman-Meyer, LCSW, USA; and Sharyn Leff, LCSW, USA

**Moderator:** Sally Bjorklund, MA, LMHC, USA

### 8. Shame and Its Influence on the Spoken, the Unspoken, and the Unspeakable

**Speakers:** Yael Greenberg, PsyD, USA; Robert Benedetti, PhD, USA; and Janet Benton, PsyD, USA

**Interlocutor & Moderator:** Joyce Klein, LICSW, USA

### 9. The Pleasures and Banality of the Negative and The Unknown

**Speakers:** Jade McGleughlin, LICSW, USA; Stacey Novack, PsyD, USA; and Uri Hadar, PhD, Israel

**Discussant:** Chana Ullman, PhD, Israel

**Moderator:** Diana Faydysh, MA, USA

### 10. Speaking of the Unspoken, Unsymbolized, and Unrepresented in Self and Space

**Speakers:** Sigal Eden Almogi, PhD, Israel; Smadar de Lange, PhD, Israel; and Rose Gupta, PsyD, LCSW, USA

**Interlocutor & Moderator:** Alejandro Avila Espada, PhD, Spain

### 11. Unspeaking Spirituality and Religion in Psychoanalysis by Speaking our Rhetorical Problem

**Speakers:** Earl Bland, PsyD, USA; Brad Strawn, PhD, USA; and Roy Barsness, PhD, USA

**Moderator:** Lewis Barth, PhD, PsyD, USA

### 12. The Emerging Clinical Mind: An Intimate Dialogue within the Supervisory Matrix

**Speakers:** Taz Morgan, MA, USA and Gabrielle Taylor, PhD, USA

**Discussant:** Michelle Harwell, LMFT, PsyD, USA

**Moderator:** Robyn Sewitz, PsyD, LCSW, USA

#### 10:00am Adjournment of Paper/Panel Session 6

#### 10:15am PLENARY V: Clinical Implications of the Analyst's Subjectivity – On the Impact of Culture, Psyche and Soul

**Presenters:** Stavros Charalambides, MA, Greece and Sandra Toribio Caballero, PsyD, Spain

**Discussant & Moderator:** Steven Kuchuck, DSW, USA

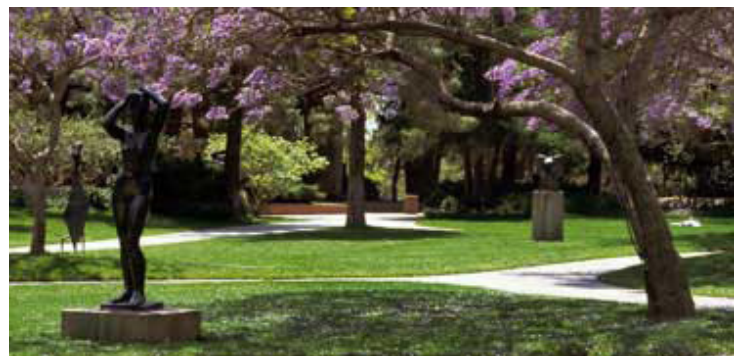
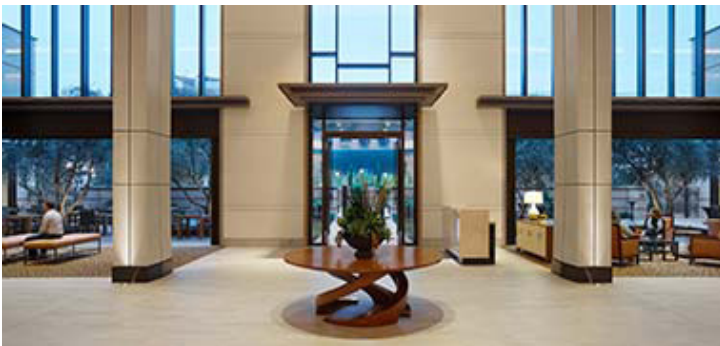
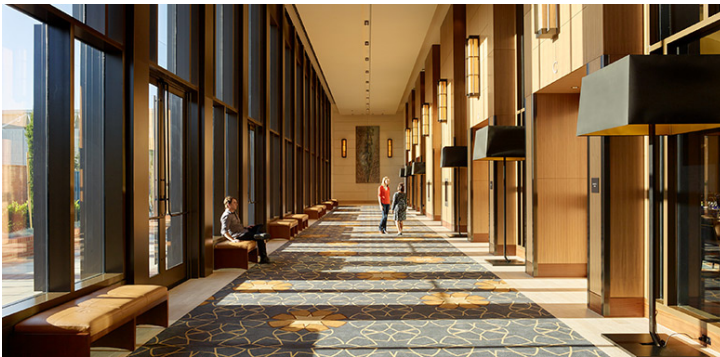
#### 12:15pm Conference Closing Remarks: Our Relational Legacy: An Invitation to Think?

**Presenter:** Margaret Mitchell Black, LCSW, USA

#### 12:30pm Round Table Discussion with the Audience

**Presenters:** Malcolm Owen Slavin, PhD, USA; Susanna Federici, PhD, Italy; Steven Kuchuck, DSW, USA; Philip Ringstrom, PsyD, PhD, USA; and Ilene Philipson, PhD, PhD, USA

#### 1:15PM FINAL ADJOURNMENT



# IARPP 2020 CONFERENCE REGISTRATION FORM

**4 WAYS TO REGISTER!**

**ONLINE**  
[www.iarppconference.org](http://www.iarppconference.org)

**BY FAX**  
+1-888-280-1476

**BY PHONE**  
+1-858-270-3503

**BY MAIL**  
IARPP 2020 Conference, 3298 Governor Dr., Ste. 22270, San Diego, CA 92192

PLEASE PRINT OR TYPE

Last Name: \_\_\_\_\_ First Name: \_\_\_\_\_ Degree(s): \_\_\_\_\_

Address: \_\_\_\_\_

City: \_\_\_\_\_ State: \_\_\_\_\_ Postal Code: \_\_\_\_\_ Country: \_\_\_\_\_

Phone Number: (\_\_\_\_) \_\_\_\_\_ Fax Number: (\_\_\_\_) \_\_\_\_\_ Email: \_\_\_\_\_

Profession: \_\_\_\_\_ State/Professional License No.: \_\_\_\_\_ (for CE Certificate)

**OPTIONAL PRE-CONFERENCE:** By or On May 18th After May 18th  
Member  \$ 80  \$110  
Non-Member  \$110  \$140

## THURSDAY, PRE-CONFERENCE SESSION SELECTION:

1st Choice \_\_\_\_\_ 2nd Choice \_\_\_\_\_

## MAIN CONFERENCE REGISTRATION FEES

**CATEGORY 1: USA** By or On May 18th After May 18th  
Member  \$480  \$530  
Non-Member  \$540  \$590  
Candidate/Academic\*  \$375  \$425  
Candidate Non-Member\*  \$415  \$465  
Students\*  \$210  \$260  
Student Non-Member\*  \$260  \$310

**CATEGORY 2: Asia/Africa/Australia/Canada/Europe/Israel/Latin America/New Zealand** By or On May 18th After May 18th  
Member  \$395  \$445  
Non-Member  \$445  \$455  
Candidate/Academic\*  \$305  \$355  
Candidate Non-Member\*  \$355  \$395  
Students\*  \$150  \$200  
Student Non-Member\*  \$190  \$240

## MAIN CONFERENCE PAPER/PANEL SESSION CHOICES

Indicate your preferred choice and one alternative for EACH Session:

### Thursday Afternoon Paper/Panel Session 1:

1st Choice \_\_\_\_\_ 2nd Choice \_\_\_\_\_

### Thursday Afternoon Paper/Panel Session 2:

1st Choice \_\_\_\_\_ 2nd Choice \_\_\_\_\_

### Friday Morning Paper/Panel Session 3:

1st Choice \_\_\_\_\_ 2nd Choice \_\_\_\_\_

### Saturday Morning Paper/Panel Session 4:

1st Choice \_\_\_\_\_ 2nd Choice \_\_\_\_\_

### Saturday Afternoon Paper/Panel Session 5:

1st Choice \_\_\_\_\_ 2nd Choice \_\_\_\_\_

### Sunday Morning Paper/Panel Session 6:

1st Choice \_\_\_\_\_ 2nd Choice \_\_\_\_\_

**\*PLEASE NOTE:** Candidate/Academic and Student registrations must be accompanied by a letter from the Training Director verifying status. Photocopies of Student IDs are also accepted.

## OPTIONAL & TICKETED FEES

**Paper/Panel Paper(s) Electronic Rental:**  \$15 each set

The paper panel set will be sent electronically through the conference app with all the papers from the panels you registered. Each electronic packet will be distributed an hour prior to each session and removed from the app after each session. If you switch sessions at the conference, we cannot provide electronic papers for the switched sessions. The downloading or sharing of these papers is prohibited.

**Optional Reception Ticket** In Advance  \$75 At the Conference  \$85

## FEE TOTALS:

Optional Pre-Conference Programs \$ \_\_\_\_\_

Main Conference Fee \$ \_\_\_\_\_

Optional Reception Tickets: QTY: \_\_\_\_\_ x \$75 = \$ \_\_\_\_\_

Paper/Panel Sessions Paper(s) Rental: \$15 \$ \_\_\_\_\_

## TOTAL AMOUNT DUE

\$ \_\_\_\_\_

Check Enclosed. **Payable to: IARPP**

(A \$75.00 U.S. fee will be assessed for returned checks.)

Bill my **Credit Card:**  VISA  MasterCard  AMEX

Account #: \_\_\_\_\_

Exp. Date: \_\_\_\_\_ 3- or 4-Digit Security Code#: \_\_\_\_\_  
(on back for MC or VISA, on front for AMEX)

Signature: \_\_\_\_\_

Street Address on Credit Card Billing

City, State or Province, Country, Zip/Postal Code:

Will you need any special assistance at the conference?

Please list your needs: \_\_\_\_\_

## Mail to: IARPP 2020

3298 Governor Drive, Suite 22270 • San Diego, CA 92192

**Phone: +1-858-270-3503 • Fax: +1-888-280-1476**

A \$75.00 U.S. fee will be assessed for returned checks.

Only checks linked to a US bank can be accepted.

**NOTE:** Please make hotel reservations directly with:

**Luskin Conference Center**

425 Westwood Plaza, Los Angeles, CA 90095

**Phone: +1-855-522-8252 Reservations: +1-855-522-8252**

**Website:** <http://www.LuskinConferenceCenter.UCLA.edu/>